

NOTES:

- 1) THE SITE IS IDENTIFIED AS RICHLAND COUNTY TAX PARCEL 08915-08-01 (PORTION).
- 2) THE PROJECT SITE IS IN THE CITY OF COLUMBIA.
- 3) ALL ELEVATIONS SHOWN HAVE BEEN BASED UPON NAVD 88 DATUM.
- 4) THE CONTRACTOR IS RESPONSIBLE FOR DETERMINING THE LOCATIONS AND ELEVATIONS OF ALL UNDERGROUND UTILITIES PRIOR TO CONSTRUCTION.
- 5) ALL DIMENSIONS REFERENCED TO THE CURB INCLUDING RADII ARE TO THE FACE OF CURB (PARKING LOT SIDE).

REFERENCES:

- 1) SITE SURVEY AND TOPOGRAPHIC SURVEY PLAT PREPARED FOR UNIVERSITY OF SOUTH CAROLINA DARLA MOORE SCHOOL OF BUSINESS, DATED NOVEMBER 3, 2010, BY B.P. BARBER AND ASSOCIATES, INC.

EROSION CONTROL NOTES

1. LAND DISTURBING ACTIVITIES SHALL NOT COMMENCE UNTIL APPROVAL TO DO SO HAS BEEN ISSUED BY GOVERNING AUTHORITIES.
2. THE CONTRACTOR SHALL COMPLY WITH ALL STATE AND LOCAL ORDINANCES THAT APPLY.
3. ALL SEDIMENT AND EROSION CONTROL DEVICES SHALL BE INSPECTED EVERY SEVEN (7) DAYS. IF SITE INSPECTIONS IDENTIFY BMP'S THAT ARE DAMAGED OR ARE NOT OPERATING EFFECTIVELY, MAINTENANCE MUST BE PERFORMED AS SOON AS PRACTICAL OR AS REASONABLY POSSIBLE AND BEFORE THE NEXT STORM EVENT WHENEVER PRACTICABLE.
4. THE EROSION CONTROL MEASURES INCLUDED IN THE STORM WATER POLLUTION PREVENTION PLAN SHALL BE INSTALLED PRIOR TO INITIAL LAND DISTURBANCE ACTIVITIES OR AS SOON AS PRACTICAL. SEDIMENT SHALL BE PREVENTED FROM DISCHARGING FROM THE PROJECT SITE BY INSTALLING AND MAINTAINING CONTROL PRACTICES AS SHOWN ON THIS PLAN. IF SHOWN ON THESE PLANS, ENERGY-DISSIPATION DEVICES OR EROSION CONTROL AT THE OUTFALL OF THE STORM SEWER SYSTEM SHALL BE INSTALLED AT THE TIME OF THE CONSTRUCTION OF THE OUTFALL. STRUCTURAL PRACTICES SHALL BE USED TO CONTROL EROSION FROM ALL SITES REMAINING UNDISTURBED FOR MORE THAN 14 DAYS.
5. THE CONTRACTOR SHALL CONTROL WASTES, GARBAGE, DEBRIS, WASTEWATER, AND OTHER SUBSTANCES ON THE SITE IN SUCH A WAY THAT THEY SHALL NOT BE TRANSPORTED FROM THE SITE BY THE ACTION OF WINDS, STORM WATER RUNOFF, OR OTHER FORCES. PROPER DISPOSAL OR MANAGEMENT OF ALL WASTES AND UNUSED BUILDING MATERIAL, APPROPRIATE TO THE NATURE OF THE WASTE OR MATERIAL IS REQUIRED. COMPLIANCE IS REQUIRED WITH ALL STATE OR LOCAL REGULATIONS REGARDING WASTE DISPOSAL, SANITARY SEWER, OR SEPTIC SYSTEMS.
6. THE CONTRACTOR MUST TAKE NECESSARY ACTION TO MINIMIZE THE TRACKING OF MUD ONTO PAVED ROADWAY(S) FROM CONSTRUCTION AREAS AND GENERATION OF DUST. THE CONTRACTOR SHALL DAILY REMOVE MUD/SOIL FROM PAVEMENT, AS MAY BE REQUIRED.
7. ALL ON-SITE STORM DRAIN INLETS SHALL BE PROTECTED AGAINST SEDIMENTATION AS SHOWN ON THESE PLANS.
8. STABILIZATION MEASURES SHALL BE INITIATED AS SOON AS PRACTICABLE IN PORTIONS OF THE SITE WHERE CONSTRUCTION ACTIVITIES HAVE TEMPORARILY OR PERMANENTLY CEASED, BUT IN NO CASE MORE THAN FOURTEEN (14) DAYS AFTER WORK HAS CEASED, EXCEPT AS STATED BELOW.
 - WHERE STABILIZATION BY THE 14TH DAY IS PRECLUDED BY SNOW COVER OR FROZEN GROUND CONDITIONS, STABILIZATION MEASURES MUST BE INITIATED AS SOON AS PRACTICABLE.
 - WHERE CONSTRUCTION ACTIVITY ON A PORTION OF THE SITE IS TEMPORARILY CEASED, AND EARTH-DISTURBING ACTIVITIES WILL BE RESUMED WITHIN 14 DAYS, TEMPORARY STABILIZATION MEASURES DO NOT HAVE TO BE INITIATED ON THAT PORTION OF THE SITE.
9. THIS EROSION CONTROL PLAN SHALL BE IMPLEMENTED ON ALL DISTURBED AREAS WITHIN THE CONSTRUCTION SITE. ALL MEASURES INVOLVING EROSION CONTROL PRACTICES SHALL BE INSTALLED UNDER THE GUIDANCE OF QUALIFIED PERSONNEL EXPERIENCED IN EROSION CONTROL, AND FOLLOWING THE PLANS AND SPECIFICATIONS INCLUDED HEREIN.
10. DURING THE PERIOD OF CONSTRUCTION ACTIVITY, ALL EROSION CONTROL MEASURES SHALL BE MAINTAINED BY THE CONTRACTOR. AT COMPLETION OF CONSTRUCTION, THE CONTRACTOR SHALL COORDINATE THE TRANSFER OF MAINTENANCE RESPONSIBILITIES, IF REQUIRED, WITH THE OWNER. MAINTENANCE SHALL BE IN ACCORDANCE WITH DHEC'S MANUAL, "SOUTH CAROLINA STORMWATER MANAGEMENT AND SEDIMENT CONTROL HANDBOOK FOR LAND DISTURBANCE ACTIVITIES".
11. ALL EROSION CONTROL PRACTICES SHALL BE IN ACCORDANCE WITH "SOUTH CAROLINA STORMWATER MANAGEMENT AND SEDIMENT CONTROL HANDBOOK FOR LAND DISTURBANCE ACTIVITIES".
12. TEMPORARY DIVERSION BERMS AND/OR DITCHES WILL BE PROVIDED AS NEEDED DURING CONSTRUCTION TO PROTECT WORK AREAS FROM UPSLOPE RUNOFF AND/OR TO DIVERT SEDIMENT-LADEN WATER TO APPROPRIATE TRAPS OR STABLE OUTLETS.
13. LITTER, CONSTRUCTION DEBRIS, OILS, FUELS, AND BUILDING PRODUCTS WITH SIGNIFICANT POTENTIAL FOR IMPACT (SUCH AS STOCKPILES OF FRESHLY TREATED LUMBER) AND CONSTRUCTION CHEMICALS THAT COULD BE EXPOSED TO STORM WATER MUST BE PREVENTED FROM BECOMING A POLLUTANT SOURCE IN STORM WATER DISCHARGES.
14. ALL EROSION CONTROL DEVICES SHALL BE PROPERLY MAINTAINED DURING ALL PHASES OF CONSTRUCTION UNTIL THE COMPLETION OF ALL CONSTRUCTION ACTIVITIES AND ALL DISTURBED AREAS HAVE BEEN STABILIZED. ADDITIONAL CONTROL DEVICES MAY BE REQUIRED DURING CONSTRUCTION IN ORDER TO CONTROL EROSION AND/OR OFFSITE SEDIMENTATION. ALL TEMPORARY CONTROL DEVICES SHALL BE REMOVED ONCE CONSTRUCTION IS COMPLETE AND THE SITE IS STABILIZED.
15. THE APPROVED EROSION CONTROL PLAN MUST BE RETAINED ON-SITE AT ALL TIMES DURING THE PERIOD OF CONSTRUCTION.
16. IF THE INSTALLATION OF THE STORM DRAINAGE SYSTEM IS INTERRUPTED BY WEATHER OR NIGHTFALL, PIPE ENDS SHALL BE COVERED WITH FILTER FABRIC.
17. PROVIDE SILT FENCE AND/OR OTHER CONTROL DEVICES, AS MAY BE REQUIRED, TO CONTROL SOIL EROSION DURING UTILITY CONSTRUCTION. ALL DISTURBED AREAS SHALL BE CLEANED, GRADED, AND STABILIZED WITH GRASSING IMMEDIATELY AFTER THE UTILITY INSTALLATION. FILL, COVER AND TEMPORARY SEEDING AT THE END OF EACH DAY ARE RECOMMENDED.
18. ALL TEMPORARY CONTROL DEVICES SHALL BE REMOVED ONCE CONSTRUCTION IS COMPLETE AND THE SITE IS STABILIZED.
19. THE CONTRACTOR SHALL RESPREAD THE TOPSOIL ON SITE AS MUCH AS POSSIBLE PRIOR TO FINAL GRADING AND STABILIZATION.
20. THIS PLAN SHALL NOT BE CONSIDERED ALL INCLUSIVE. THE CONTRACTOR SHALL TAKE ALL NECESSARY MEASURES AT HIS EXPENSE TO REDUCE EROSION AND PREVENT SEDIMENT FROM LEAVING THE SITE. THE CONTRACTOR IS RESPONSIBLE FOR ALL CLEANUP AND REPAIR ON-SITE AND DOWNSTREAM DUE TO EROSION AND SILTATION.

CONSTRUCTION SEQUENCE (CONTINUED)

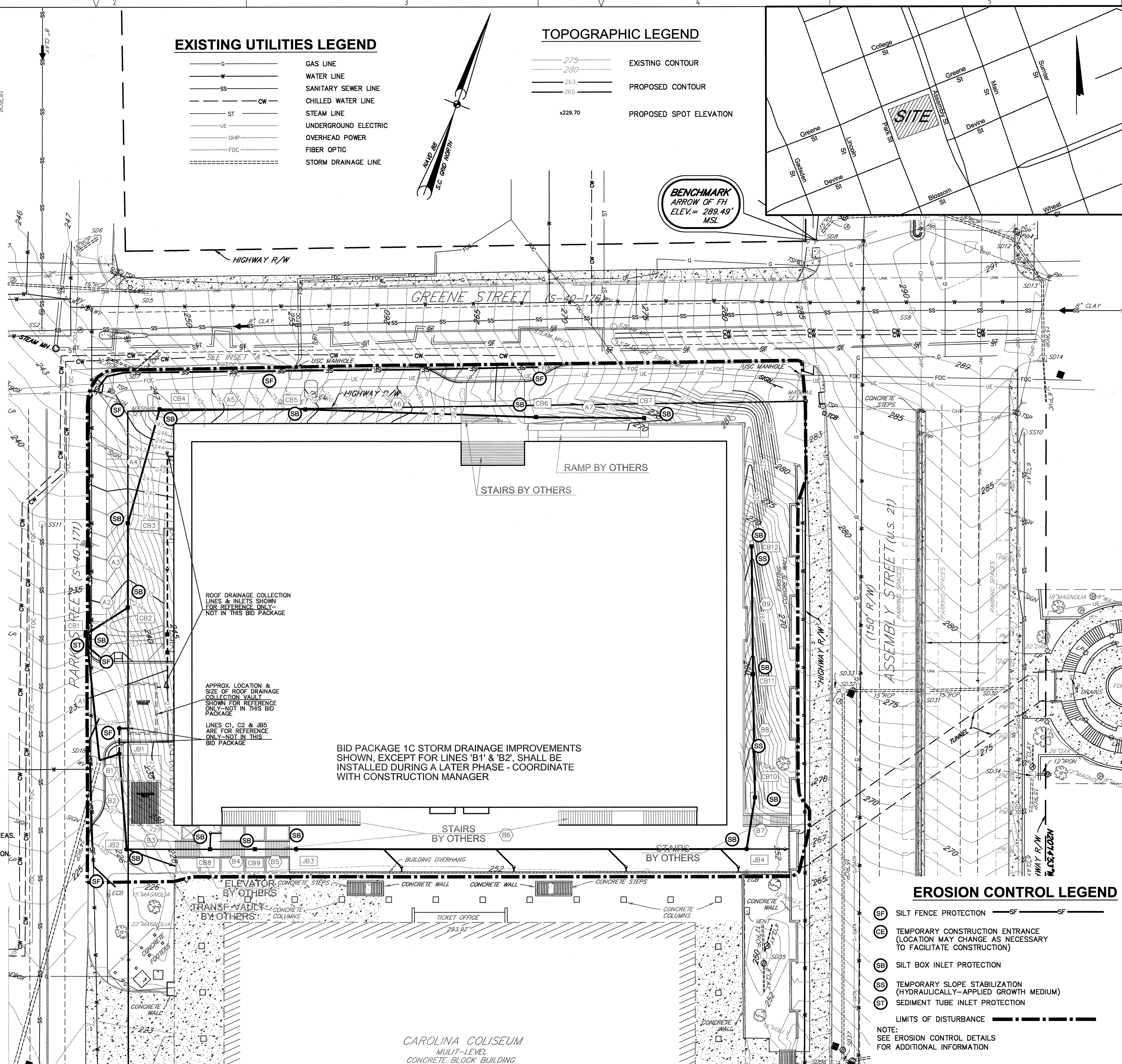
- 8) PERFORM EARTHWORK OPERATIONS (CUT, FILL, ETC.) FOR DROP-OFF & SERVICE DRIVE AREAS.
- 9) REMOVE TEMPORARY SHORING AS NECESSARY.
- 10) INSTALL REMAINDER OF STORM DRAINAGE STRUCTURES, PIPING & INSTALL INLET PROTECTION.
- 11) INSTALL OTHER UTILITIES. GRASS DISTURBED AREAS.
- 12) PERFORM FINISH GRADING FOR DROP-OFF & SERVICE DRIVE AREAS & INSTALL SIDEWALK.
- 13) INSTALL PERMANENT GRASSING PER LANDSCAPE PLAN.
- 14) INSTALL STONE BASE IN THE DROP-OFF & SERVICE DRIVE AREAS.
- 15) AFTER AREAS ARE STABILIZED, REMOVE THE INLET PROTECTION & SILT FENCING.
- 16) PAVE THE DROP-OFF AND SERVICE AREAS.
- 17) PERFORM FINAL SITE CLEANUP.

EXISTING UTILITIES LEGEND

— G —	GAS LINE
— W —	WATER LINE
— SS —	SANITARY SEWER LINE
— CW —	CHILLED WATER LINE
— ST —	STEAM LINE
— UE —	UNDERGROUND ELECTRIC
— OHP —	OVERHEAD POWER
— FOC —	FIBER OPTIC
— — — — —	STORM DRAINAGE LINE

TOPOGRAPHIC LEGEND

— 275 —	EXISTING CONTOUR
— 280 —	
— 283 —	PROPOSED CONTOUR
— 285 —	
x228.70	PROPOSED SPOT ELEVATION



EROSION CONTROL LEGEND

(SF)	SILT FENCE PROTECTION	— SF —	SF
(CE)	TEMPORARY CONSTRUCTION ENTRANCE (LOCATION MAY CHANGE AS NECESSARY TO FACILITATE CONSTRUCTION)		
(SB)	SILT BOX INLET PROTECTION		
(SS)	TEMPORARY SLOPE STABILIZATION (HYDRAULICALLY-APPLIED GROWTH MEDIUM)		
(ST)	SEDIMENT TUBE INLET PROTECTION		
— — — — —	LIMITS OF DISTURBANCE		

NOTE:
SEE EROSION CONTROL DETAILS
FOR ADDITIONAL INFORMATION

USC BUSINESS PARTNERSHIP FOUNDATION
ON BEHALF OF
USC CAMPUS PLANNING & CONSTRUCTION

PROJECT NAME:
UNIVERSITY OF SOUTH CAROLINA
DARLA MOORE SCHOOL OF BUSINESS
CONSTRUCTION
BID PACKAGE 1C: SITE PREPARATION

OSE PROJECT NUMBER:
H27-6069-AC-1C

743 GREENE STREET
COLUMBIA, SC 29298
TEL: 803 777 4022 FAX: 803 777 0484

ARCHITECT:
RAFAEL VINOLY ARCHITECTS PC
50 VANDAM STREET
NEW YORK, NY 10013
TEL: 212 924 5060 FAX: 212 924 5858

STRUCTURAL ENGINEER, MEP ENGINEER,
CIVIL ENGINEER, FIRE PROTECTION
ENGINEER:
STEVENS & WILKINSON
1501 MAIN STREET, FLOOR 1
COLUMBIA, SC 29202-5801
TEL: 803 765 0320 FAX: 803 254 6209

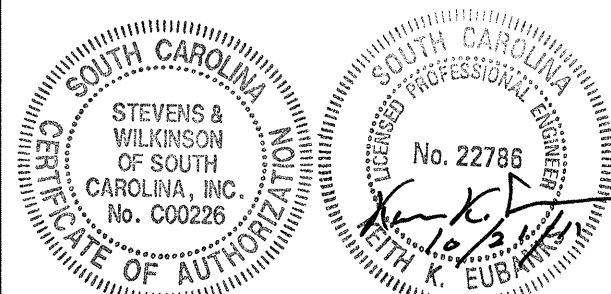
LANDSCAPE ARCHITECT:
GRIMBALL-COTTELL ASSOCIATES
600 BELTLINE BOULEVARD
COLUMBIA, SC 29205
TEL: 803 738 9525 FAX:

SURVEYOR:
BP BARBER & ASSOCIATES, INC.
101 RESEARCH DRIVE
COLUMBIA, SC 29202-1116
TEL: 803 429 4028 FAX:

SPECIFICATIONS:
ROBERT SCHWARTZ & ASSOCIATES
589 8TH AVE., 17TH FLOOR
NEW YORK, NY 10018
TEL: 212 691 3248 FAX: 212 613 1613

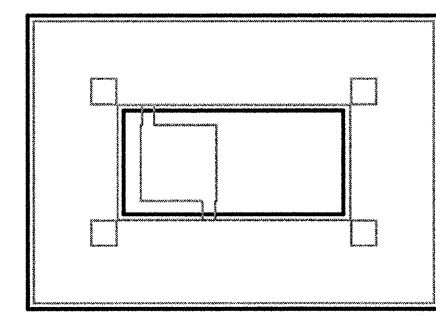
BID PACKAGE 1C
SITE PREPARATION

OCTOBER 21, 2011



SEAL & SIGNATURE

DATE	ISSUE	DATE	ISSUE	DATE	ISSUE
2011.10.21					
2011.10.17					
2011.09.09					
2011.08.29					
2011.08.19					
2011.07.31					
NO.	DATE	NO.	DATE	NO.	DATE



KEY PLAN & NORTH SIGN

0 30 60
1" = 30'

FINAL SEDIMENT &
EROSION CONTROL PLAN

SHEET TITLE:

C1701

SHEET NUMBER:

FINAL SEDIMENT & EROSION CONTROL PLAN

SCALE: 1" = 30'

01

© 2010 RAFAEL VINOLY ARCHITECTS

A

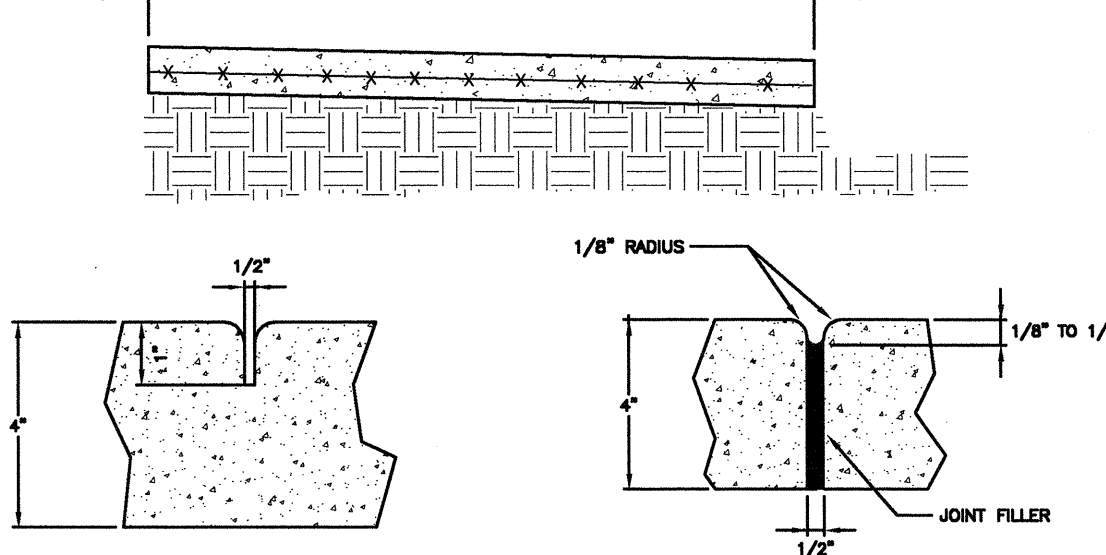
B

C

D

E

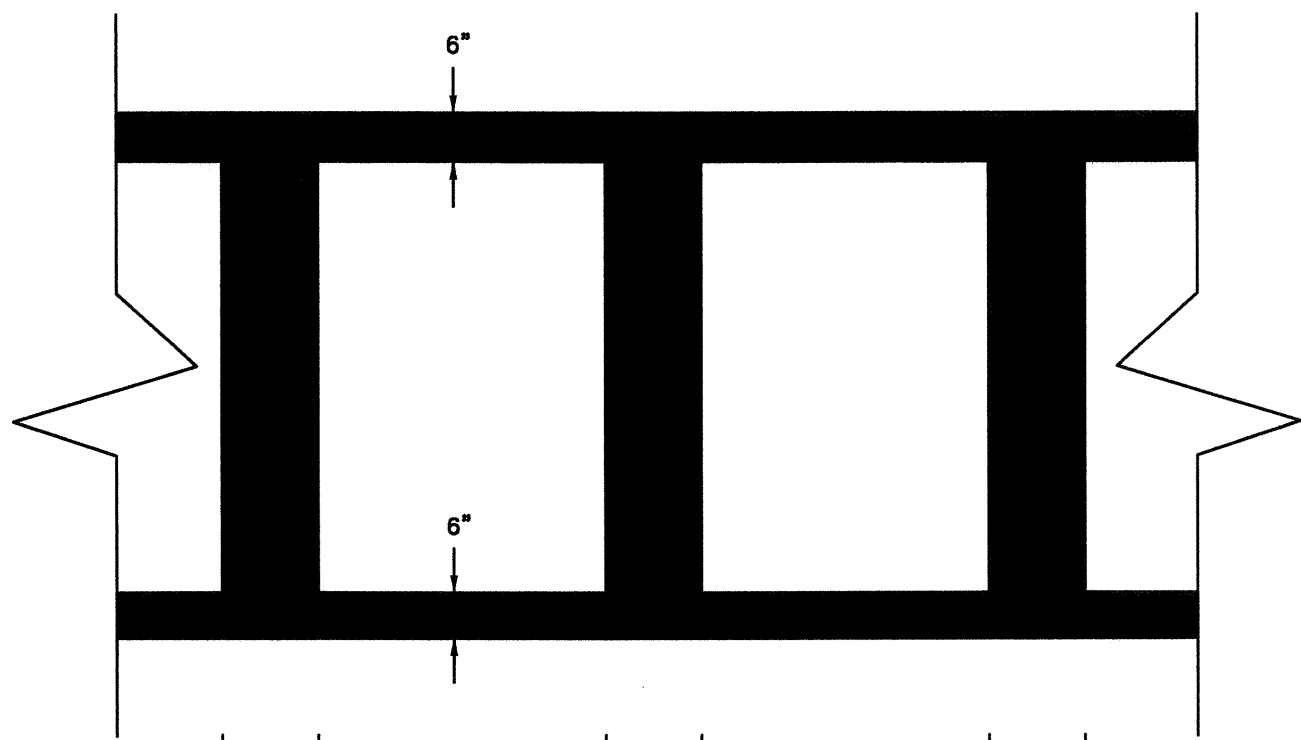
WIDTH VARIES SEE PLAN



GROOVE JOINT IN SIDEWALK
TRANSVERSE EXPANSION JOINT

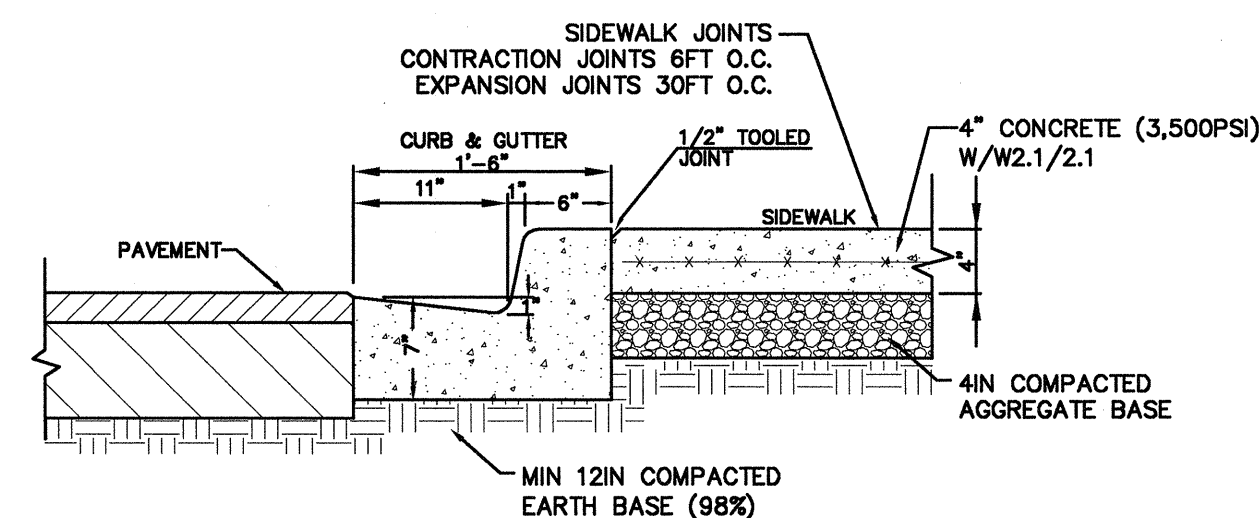
CONCRETE SIDEWALK

NTS



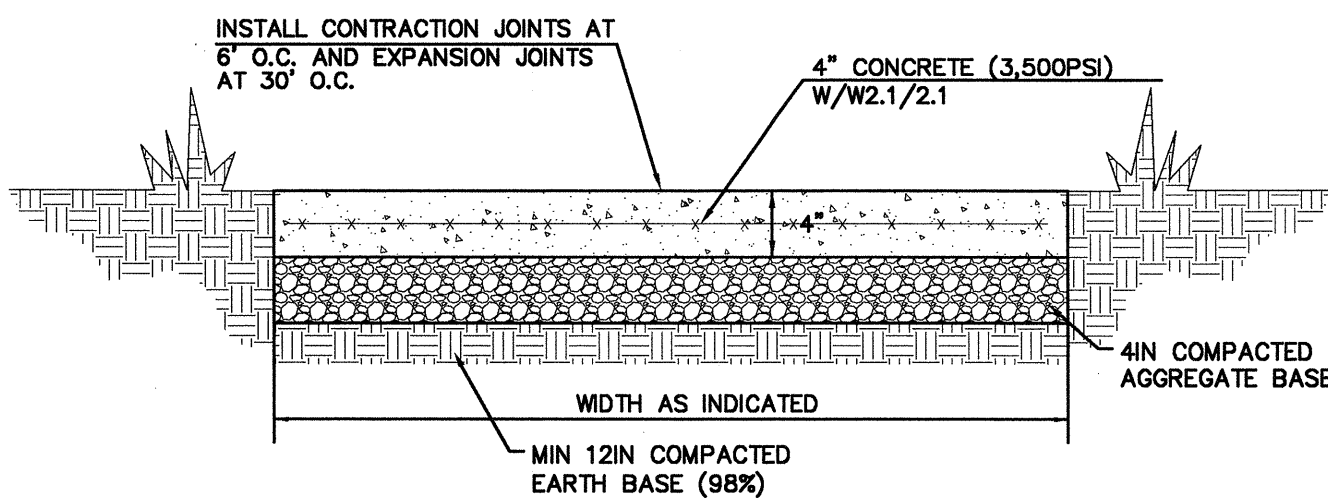
PAINTED CROSSWALK DETAIL

NTS



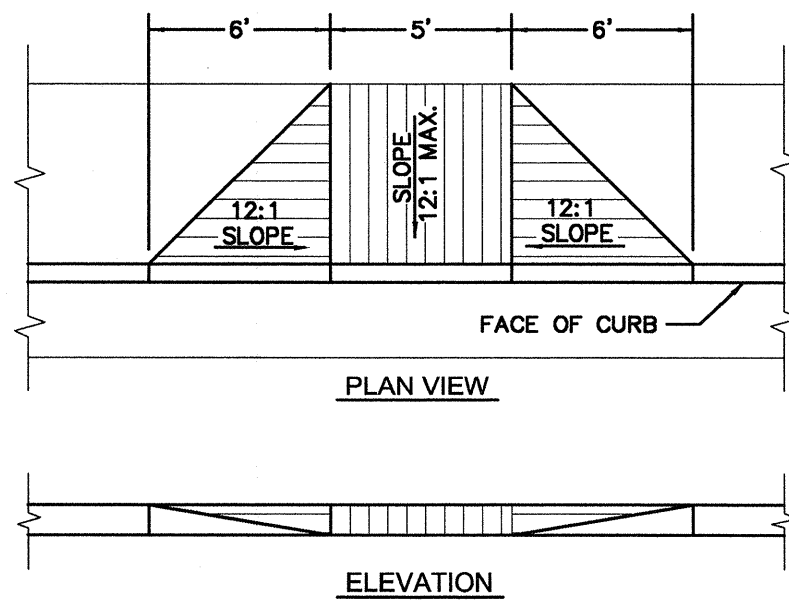
CONCRETE CURB & GUTTER & SIDEWALK DETAIL

NTS



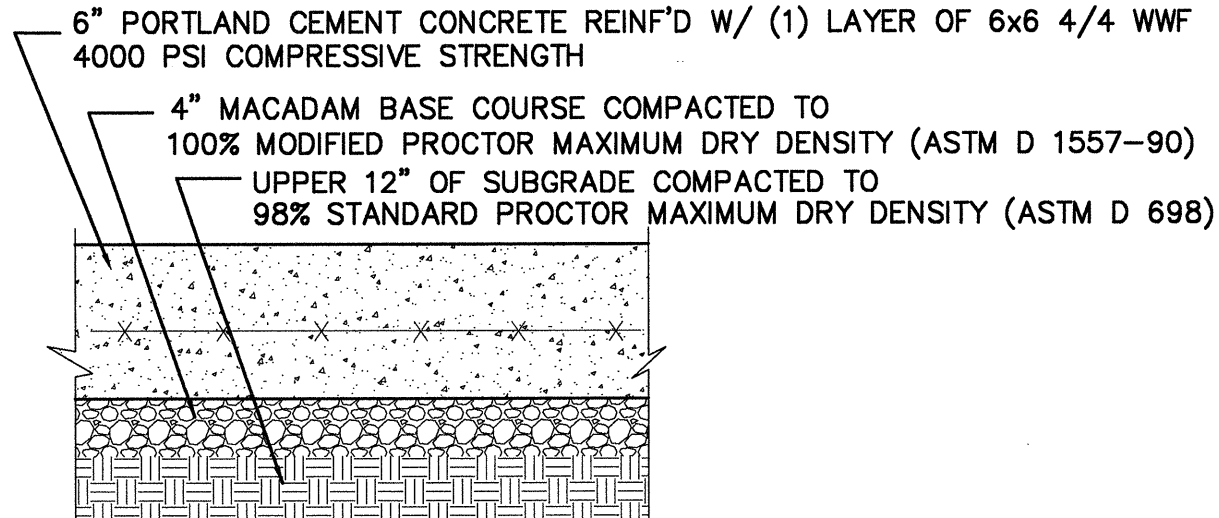
**CONCRETE SIDEWALK DETAIL
FROM BUILDING TO PARK STREET SIDEWALK
&
FROM STAIRS TO ASSEMBLY STREET SIDEWALK**

NTS



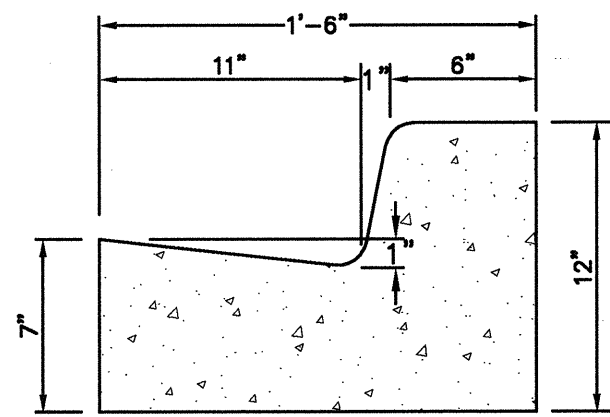
ACCESSIBLE CURB CUT DETAIL

NTS



**HEAVY DUTY CONCRETE
PAVEMENT SECTION**

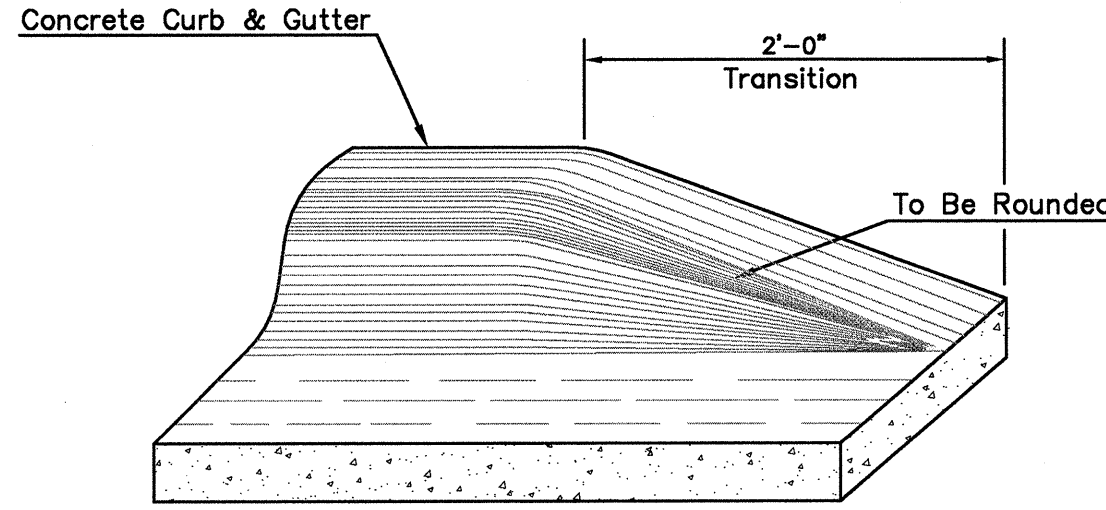
(PAVEMENT SECTION THICKNESS PER S&ME ADDENDUM-PAVEMENT SECTION RECOMMENDATIONS
DATED 4/25/2011)
NTS



"L" TYPE CURB AND GUTTER

Min. Concrete Strength = 3500 p.s.i.
NTS

WHERE GRADES INDICATE,
THIS CURB SECTION TO BE
MODIFIED TO EXPULSION
TYPE CURB.



**FEATHERING CURB AND
GUTTER DETAIL**

NTS

USC BUSINESS PARTNERSHIP FOUNDATION
ON BEHALF OF
USC CAMPUS PLANNING & CONSTRUCTION

PROJECT NAME:
UNIVERSITY OF SOUTH CAROLINA
DARLA MOORE SCHOOL OF BUSINESS
CONSTRUCTION
BID PACKAGE 1C: SITE PREPARATION

OSE PROJECT NUMBER:
H27-6069-AC-1C

743 GREENE STREET
COLUMBIA, SC 29298
TEL: 803 777 4022 FAX: 803 777 0484

ARCHITECT:
RAFAEL VINOLY ARCHITECTS PC
50 VANDAM STREET
NEW YORK, NY 10013
TEL: 212 924 5060 FAX: 212 924 5858

STRUCTURAL ENGINEER, MEP ENGINEER,
CIVIL ENGINEER, FIRE PROTECTION
ENGINEER:
STEVENS & WILKINSON
1501 MAIN STREET, FLOOR 1
COLUMBIA, SC 29201-5001
TEL: 803 765 0320 FAX: 803 254 6209

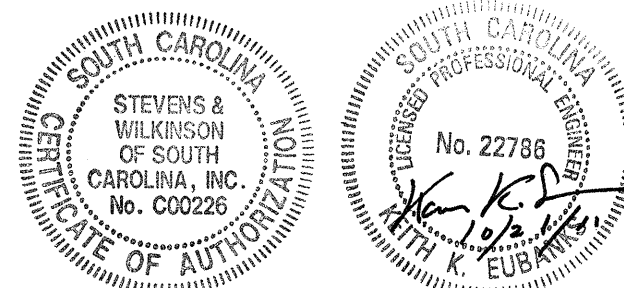
LANDSCAPE ARCHITECT:
GRIMBALL-COTTERILL ASSOCIATES
600 BELTLINE BOULEVARD
COLUMBIA, SC 29205
TEL: 803 738 9525 FAX:

SURVEYOR:
BP BARBER & ASSOCIATES, INC.
101 RESEARCH DRIVE
COLUMBIA, SC 29202-1116
TEL: 803 429 4028 FAX:

SPECIFICATIONS:
ROBERT SCHWARTZ & ASSOCIATES
589 8TH AVE., 17TH FLOOR
NEW YORK, NY 10018
TEL: 212 691 3248 FAX: 212 633 1613

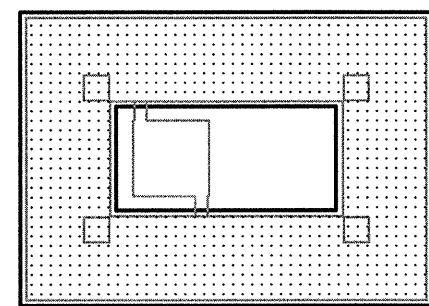
**BID PACKAGE 1C
SITE PREPARATION**

OCTOBER 21, 2011



SEAL & SIGNATURE

2011.10.21	2011.10.17	2011.09.09	2011.08.29	2011.08.19	2011.07.14
ISSUE NO.	ISSUE NO.	ISSUE NO.	ISSUE NO.	ISSUE NO.	ISSUE NO.
DATE	DATE	DATE	DATE	DATE	DATE



KEY PLAN & NORTH SIGN

**SITE
DETAILS**

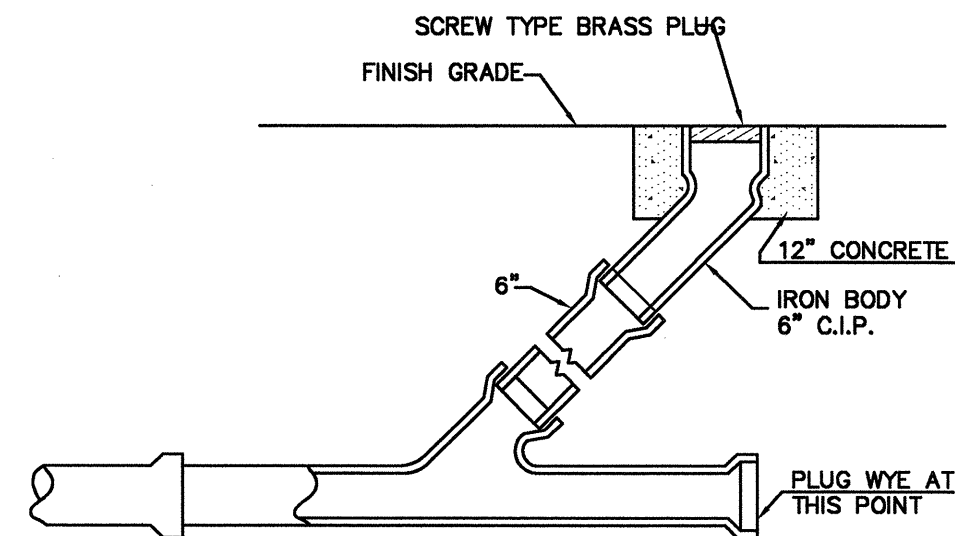
SHEET TITLE:

C2101

SHEET NUMBER:

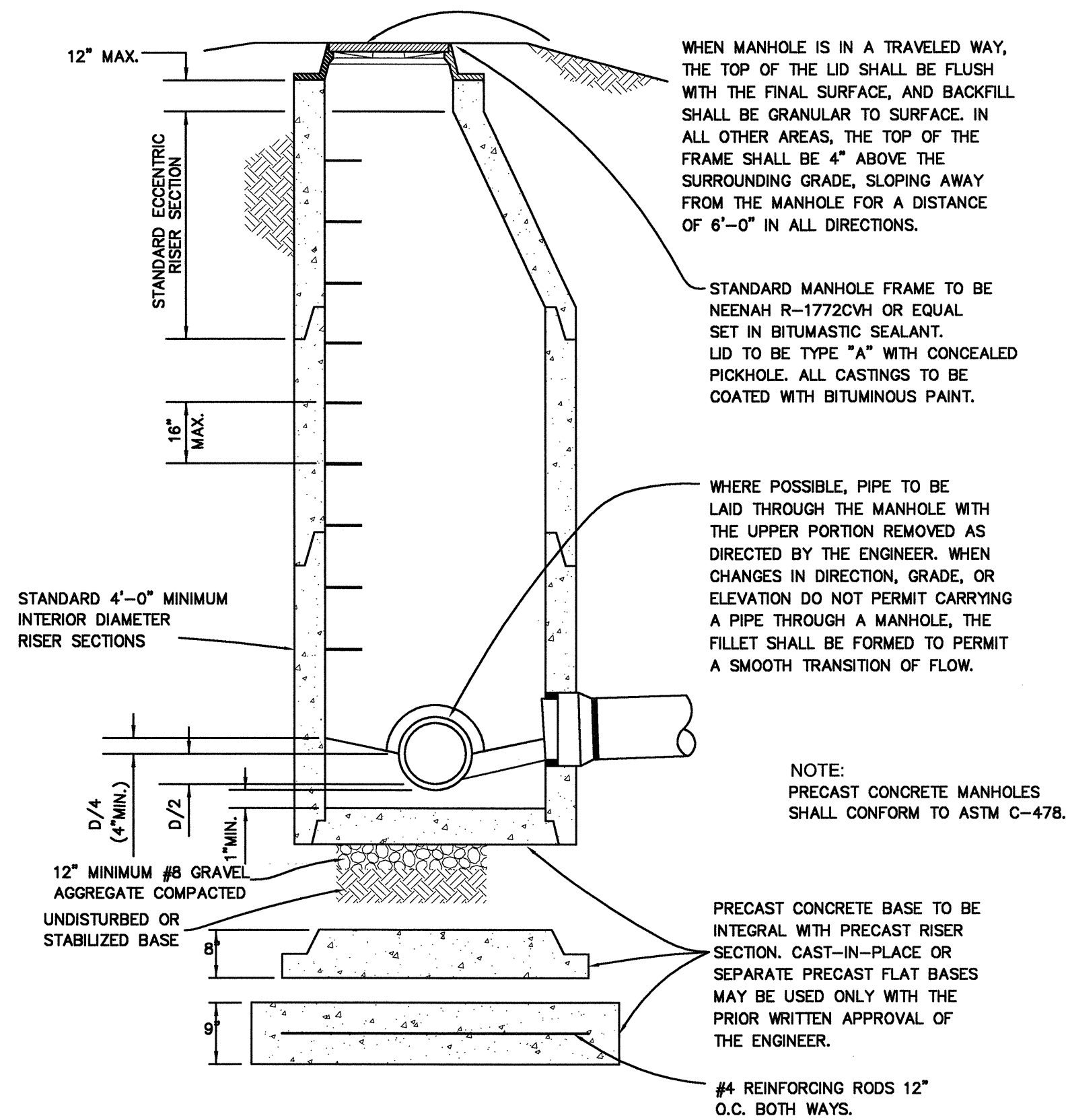
SITE DETAILS
NTS

01



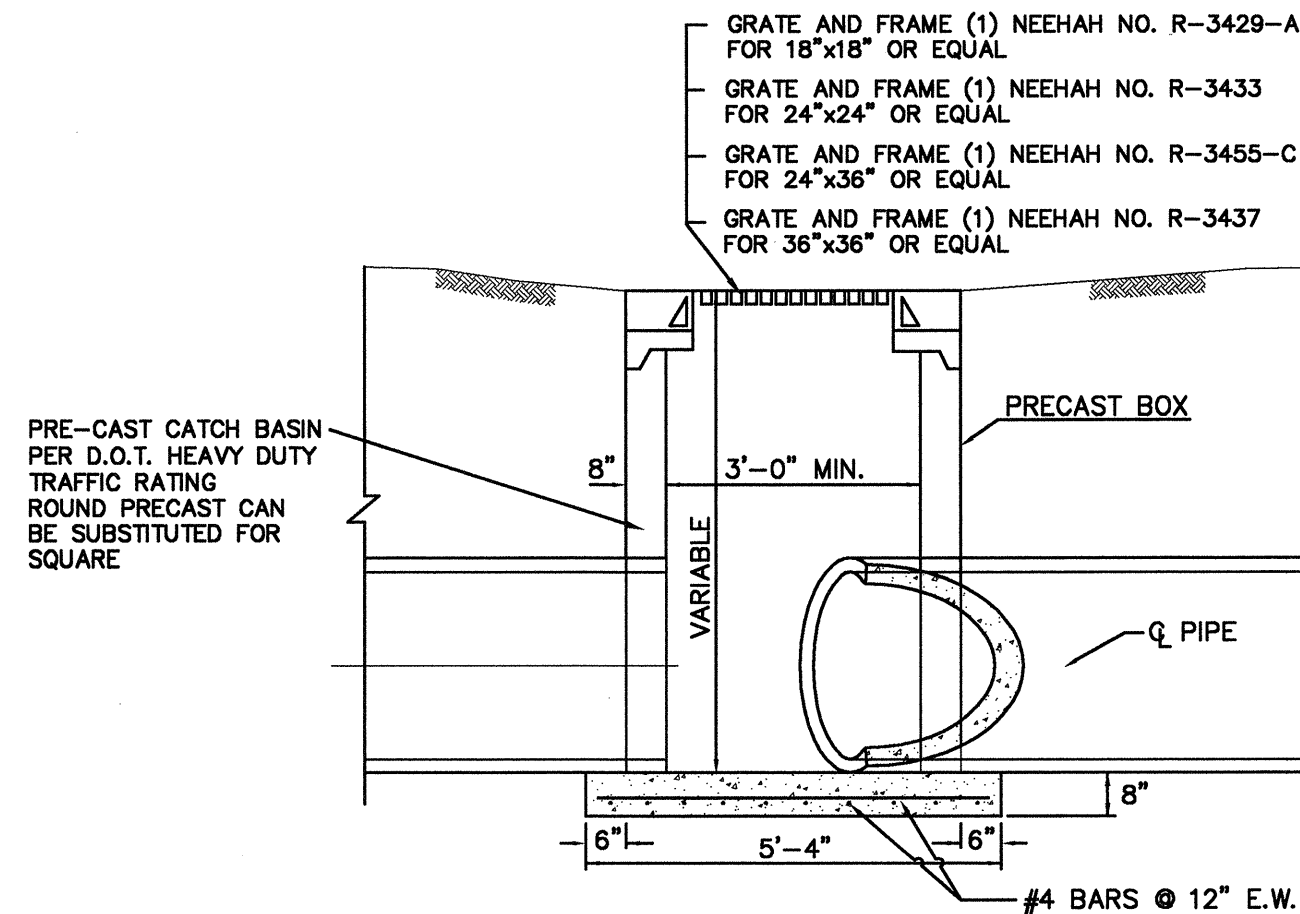
TYPICAL CLEAN-OUT DETAIL

NTS



JUNCTION BOX DETAIL

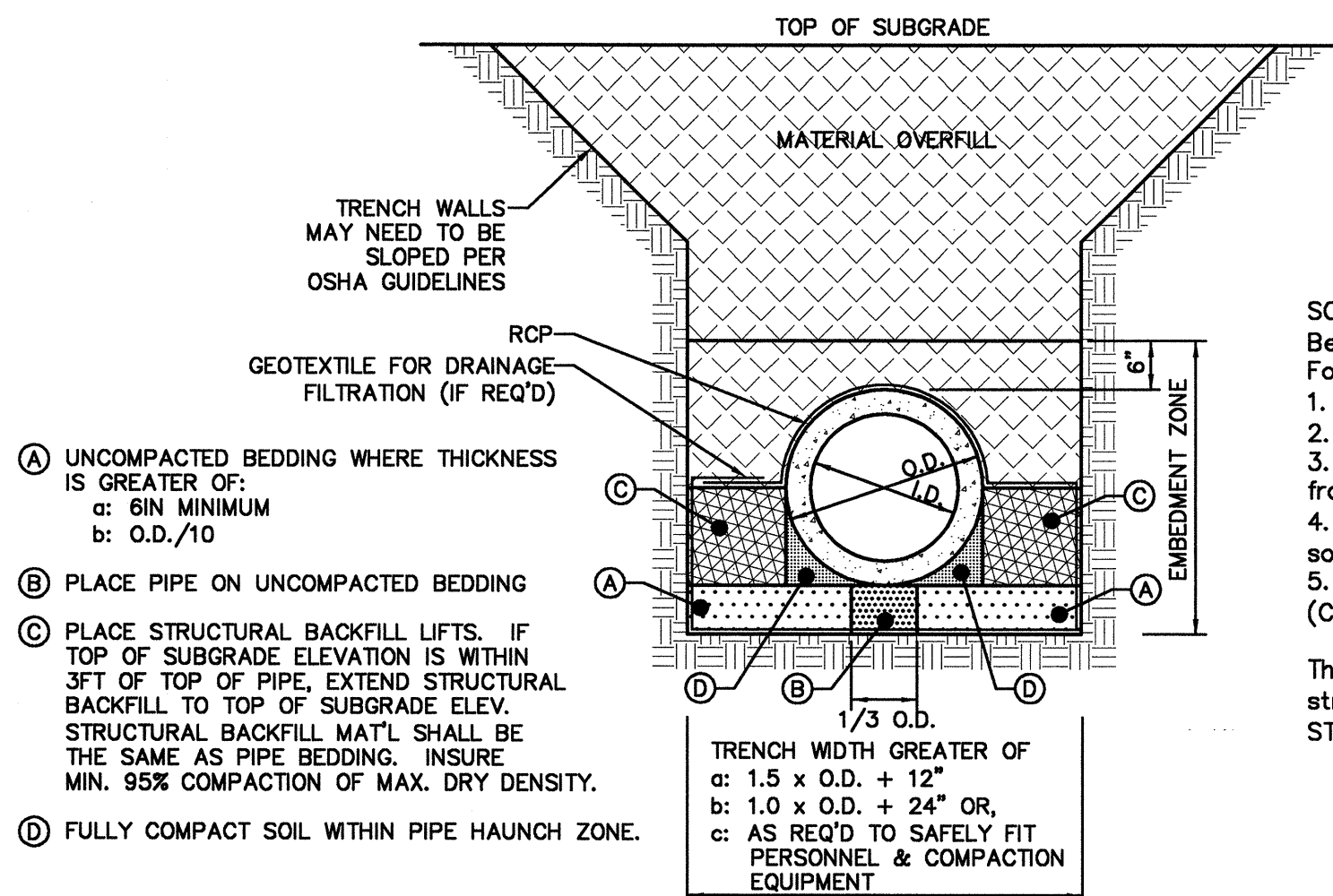
NTS



GRATE & FRAME CATCH BASIN

NTS

PIPE TRENCHES PER SCDOT SC-M-714 "SUPPLEMENTAL TECHNICAL SPECIFICATION FOR PERMANENT PIPE CULVERTS" DATED APRIL 6, 2009.



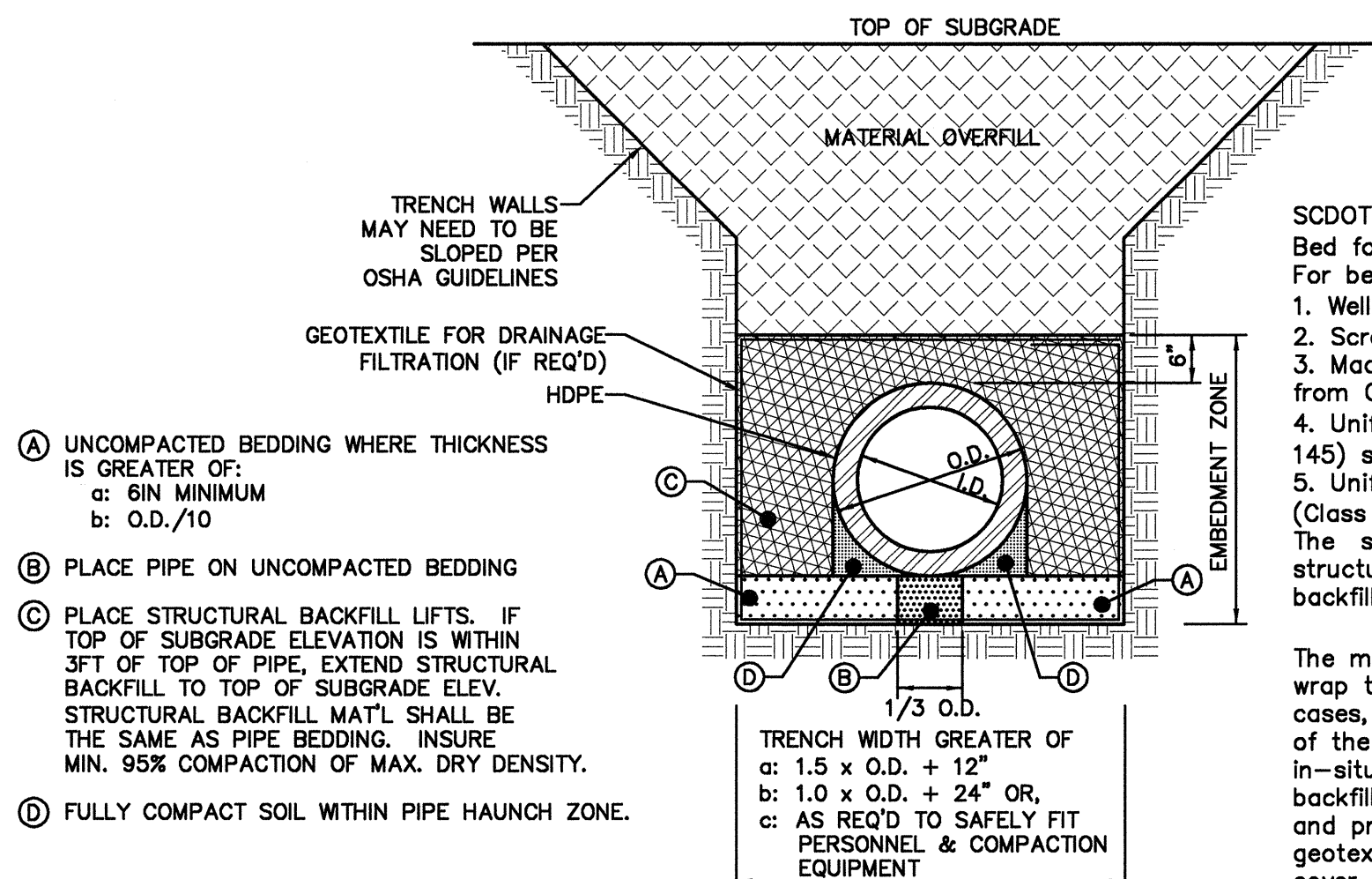
RCP PIPE BEDDING

NTS

- SCDOT SC-M-714 Section 1.3.3
Bed for Pipe (RCP)
For bedding material, use either:
1. Well graded A-1 (AASHTO M 145) soils
 2. Screenings meeting A-1 (AASHTO M 145)
 3. Macadam or Marine Limestone Graded aggregate base from Qualified Product List 2
 4. Uniformly graded, coarse grained A-3 (AASHTO M 145) soils (Class 1 wrapped)
 5. Uniformly graded angular stone as large as #5 stone (Class 2 wrapped, vibrated)

The same material must be used for bedding and structural backfill unless CLSM, "CONTROLLED LOW STRENGTH MATERIAL" is used for structural backfill.

PIPE TRENCHES PER SCDOT SC-M-714 "SUPPLEMENTAL TECHNICAL SPECIFICATION FOR PERMANENT PIPE CULVERTS" DATED APRIL 6, 2009.



HDPE PIPE BEDDING

NTS

- SCDOT SC-M-714 Section 2.3.3
Bed for Pipe (HDPE)
For bedding material, use either:
1. Well graded A-1 (AASHTO M 145) soils
 2. Screenings meeting A-1 (AASHTO M 145)
 3. Macadam or Marine Limestone Graded aggregate base from Qualified Product List 2
 4. Uniformly graded, coarse grained A-3 (AASHTO M 145) soils (Class 1 wrapped)
 5. Uniformly graded angular stone as large as #5 stone (Class 2 wrapped, vibrated)
- The same material must be used for bedding and structural backfill unless CLSM is used for structural backfill.

The materials marked as (wrapped) require geotextile wrap to control migration of fines into open voids. In all cases, use a geotextile that prevents the transmission of the smallest soil particles present in both the in-situ soil and the soil used for bedding and structural backfill. Wrap the entire bedding and backfill envelope and provide a minimum overlap of 2 feet at all geotextile splices. For shallow installations, provide a cover of 6 inches of soil between geotextile and hot mix asphalt.

USC BUSINESS PARTNERSHIP FOUNDATION
ON BEHALF OF
USC CAMPUS PLANNING & CONSTRUCTION

PROJECT NAME:
UNIVERSITY OF SOUTH CAROLINA
DARLA MOORE SCHOOL OF BUSINESS
CONSTRUCTION
BID PACKAGE 1C: SITE PREPARATION

OSE PROJECT NUMBER:
H27-6069-AC-1C
743 GREENE STREET
COLUMBIA, SC 29298
TEL: 803 777 4022 FAX: 803 777 0484

ARCHITECT:
RAFAEL VINOLY ARCHITECTS PC
50 VANDAM STREET
NEW YORK, NY 10013
TEL: 212 924 5060 FAX: 212 924 5858

STRUCTURAL ENGINEER, MEP ENGINEER,
CIVIL ENGINEER, FIRE PROTECTION
ENGINEER:
STEVENS & WILKINSON
1501 MAIN STREET, FLOOR 1
COLUMBIA, SC 29201-5801
TEL: 803 765 0320 FAX: 803 254 6209

LANDSCAPE ARCHITECT:
GRIMBALL-COTTELL ASSOCIATES
600 BEL LINE BOULEVARD
COLUMBIA, SC 29205
TEL: 803 738 9525 FAX:

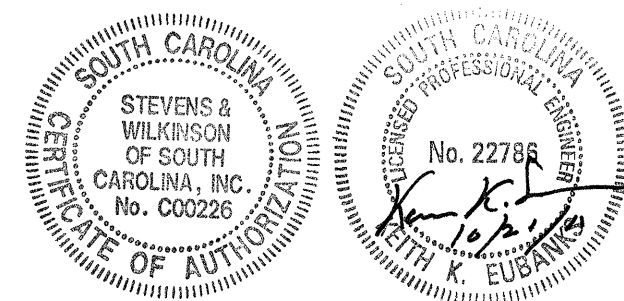
SURVEYOR:
BP BARBER & ASSOCIATES, INC.
101 RESEARCH DRIVE
COLUMBIA, SC 29202-1116
TEL: 803 429 4028 FAX:

SPECIFICATIONS:
ROBERT SCHWARTZ & ASSOCIATES
589 8TH AVE., 17TH FLOOR
NEW YORK, NY 10018
TEL: 212 691 3248 FAX: 212 633 1613

BID PACKAGE 1C

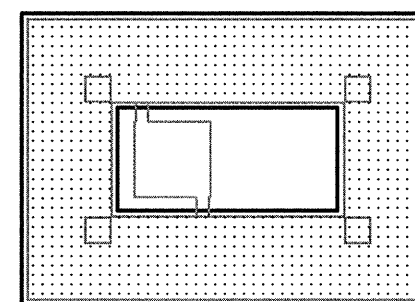
SITE PREPARATION

OCTOBER 21, 2011



SEAL & SIGNATURE

ISSUE NO.	ISSUE DATE	ISSUE NO.	ISSUE DATE	ISSUE NO.	ISSUE DATE
1	2011.07.14	2	2011.08.19	3	2011.08.29
4	2011.09.09	5	2011.10.17	6	2011.10.21



KEY PLAN & NORTH SIGN

STORM DRAINAGE
DETAILS

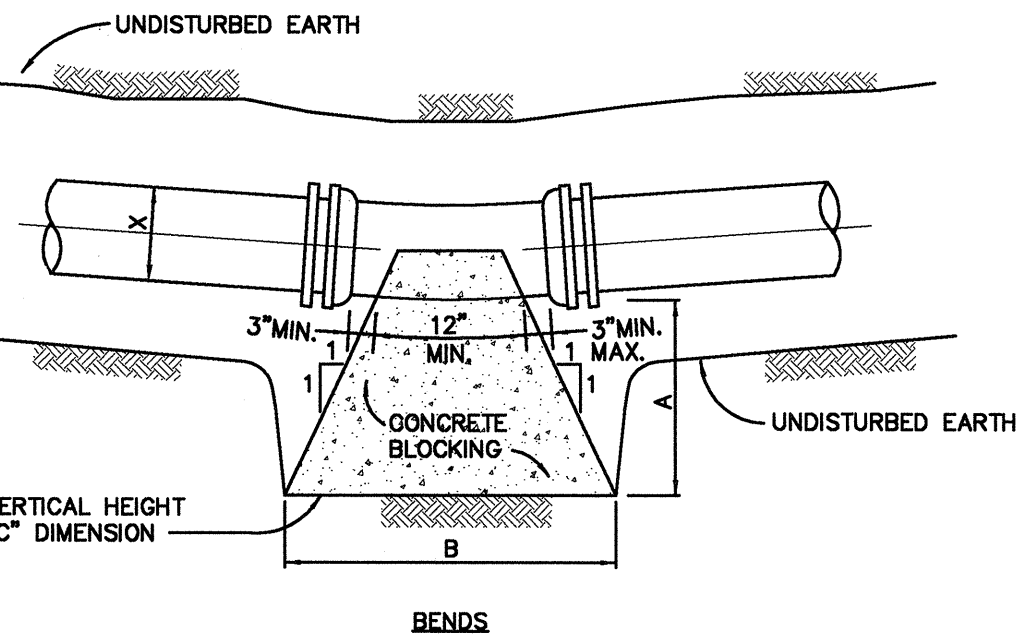
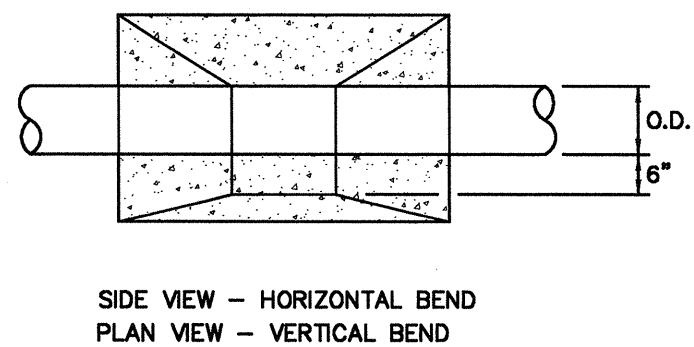
SHEET TITLE:

C2102

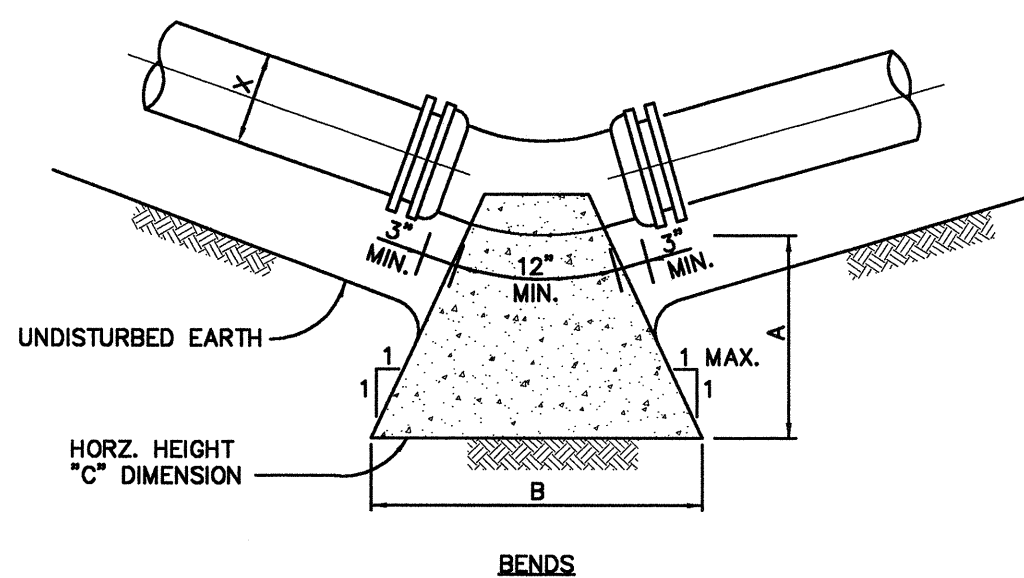
SHEET NUMBER:

STORM DRAINAGE DETAILS
NTS

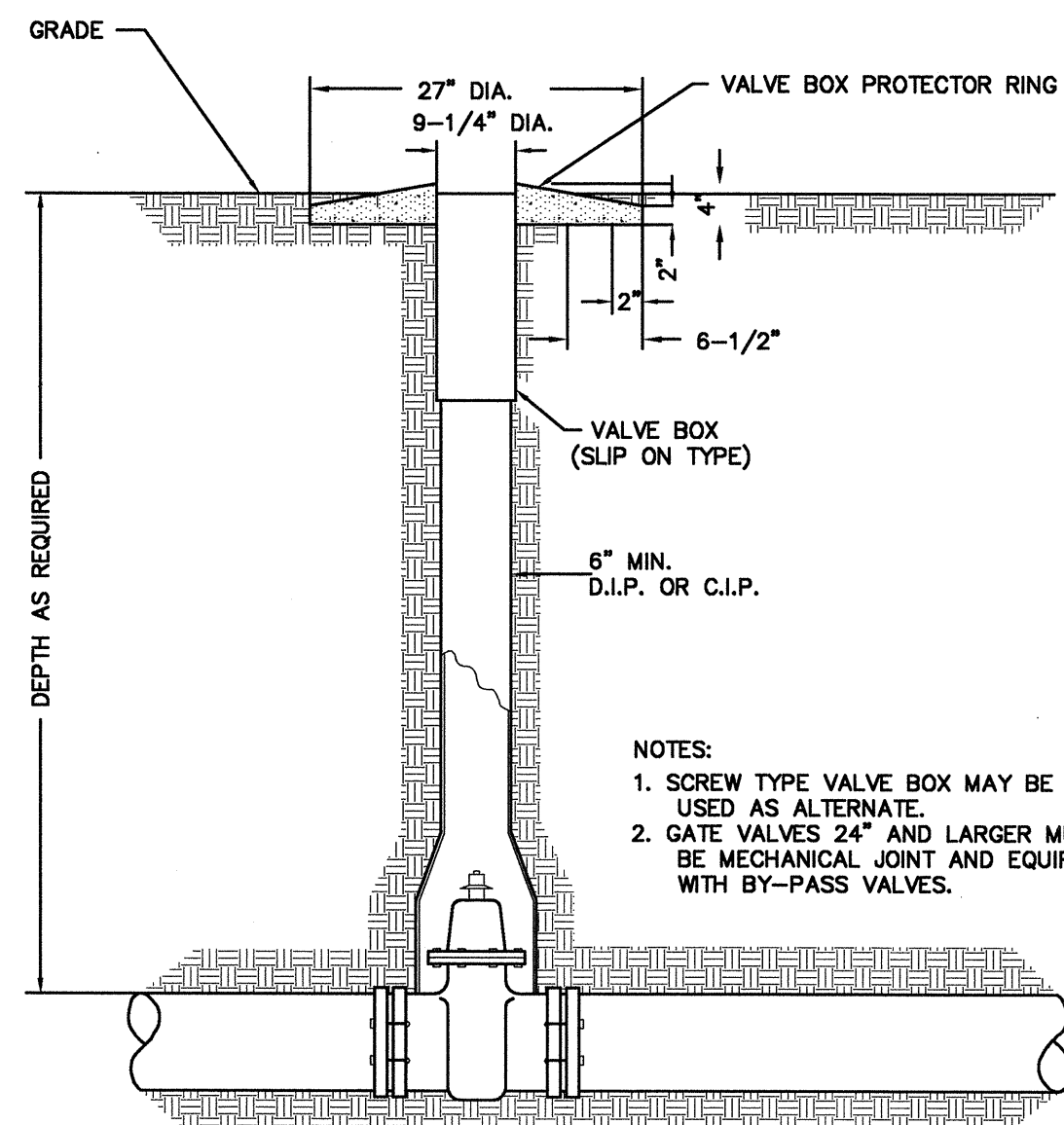
09



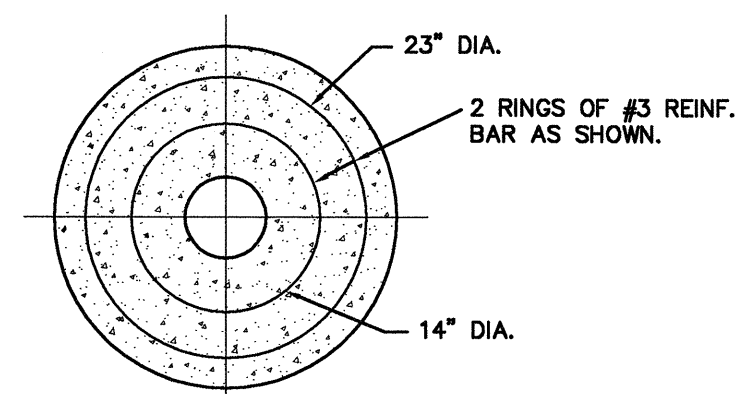
HORIZONTAL BLOCKING DETAIL



VERTICAL BLOCKING DETAIL



GATE VALVE BOX DETAIL



VALVE BOX PROTECTOR RING DETAIL

PIPE SIZE (IN.)	A	B	C	MBA (SQ. FT.)	*1
6"	2'-0"	2'-0"	1'-4"	2.7	0.13
8"	2'-0"	2'-6"	1'-10"	4.6	0.20
10"	2'-6"	3'-6"	2'-0"	7.0	0.39
12"	2'-6"	4'-6"	2'-3"	10.1	0.54
16"	3'-0"	6'-0"	2'-10"	17.0	1.08
18"	3'-0"	7'-0"	3'-0"	21.0	1.33
24"	4'-0"	10'-0"	3'-9"	37.5	3.17
30"	5'-0"	12'-0"	4'-10"	58.0	5.96

PIPE SIZE (IN.)	A	B	C	MBA (SQ. FT.)	*1
6"	2'-0"	2'-9"	1'-3"	3.4	0.16
8"	2'-0"	3'-3"	2'-0"	6.5	0.28
10"	2'-6"	4'-0"	2'-6"	10.0	0.53
12"	2'-6"	5'-0"	2'-9"	13.8	0.73
16"	3'-0"	6'-0"	4'-0"	24.0	1.50
18"	3'-0"	7'-4"	4'-0"	29.3	1.85
24"	4'-6"	12'-0"	4'-5"	53.0	4.94
30"	6'-0"	14'-0"	5'-10"	81.7	9.97

PIPE SIZE (IN.)	A	B	C	MBA (SQ. FT.)	*1
6"	2'-0"	2'-0"	1'-0"	2.0	0.11
8"	2'-0"	2'-6"	1'-5"	3.5	0.17
10"	2'-6"	3'-6"	1'-8"	5.2	0.29
12"	2'-6"	4'-6"	1'-8"	7.5	0.40
16"	3'-0"	6'-0"	2'-2"	13.0	0.80
18"	3'-0"	6'-4"	2'-6"	15.8	1.10
24"	3'-0"	6'-9"	4'-3"	28.7	1.75
30"	3'-6"	9'-3"	4'-9"	43.9	3.22

PIPE SIZE (IN.)	A	B	C	MBA (SQ. FT.)	*1
6"	2'-0"	1'-0"	1'-0"	1.0	0.08
8"	2'-0"	1'-0"	1'-0"	1.7	0.11
10"	2'-6"	2'-3"	1'-3"	2.8	0.19
12"	2'-6"	2'-6"	1'-6"	3.7	0.24
16"	3'-0"	3'-0"	2'-3"	6.5	0.48
18"	3'-0"	3'-4"	2'-6"	8.3	0.68
24"	3'-0"	4'-6"	3'-5"	15.4	1.04
30"	3'-6"	5'-0"	4'-6"	22.5	1.93

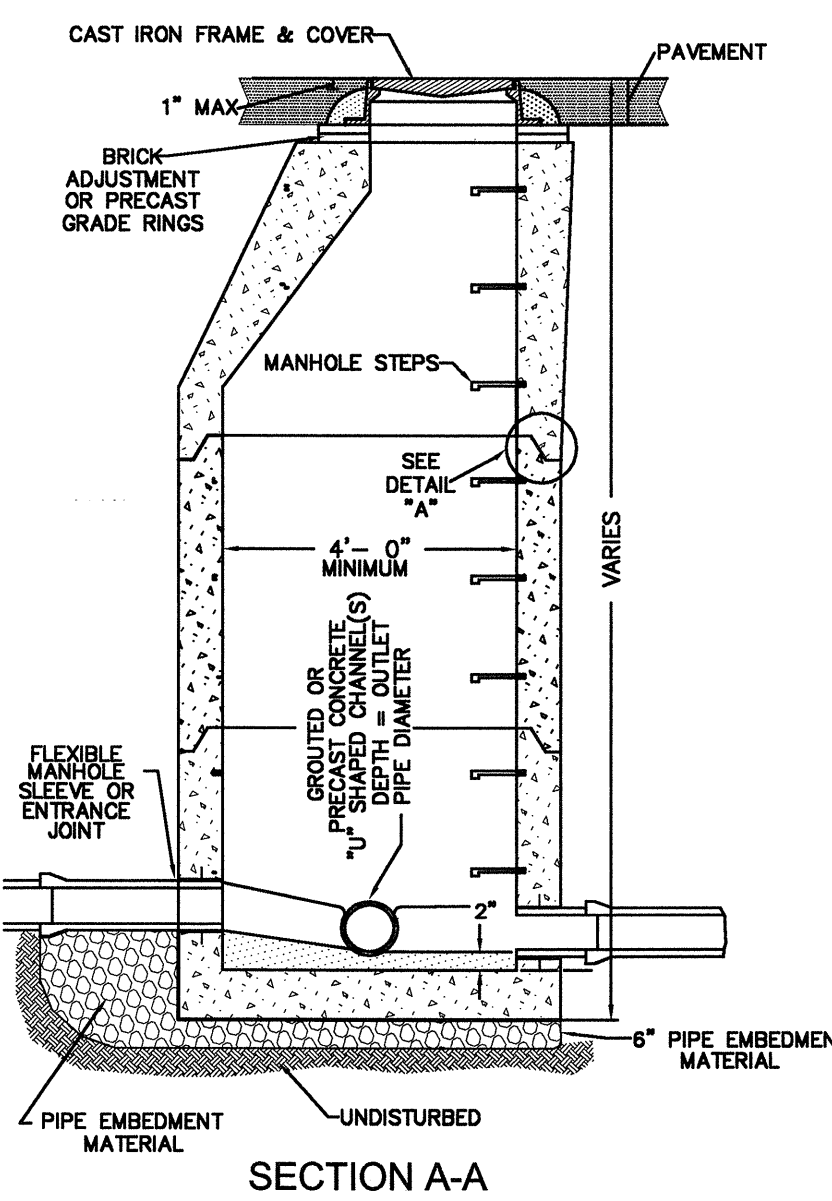
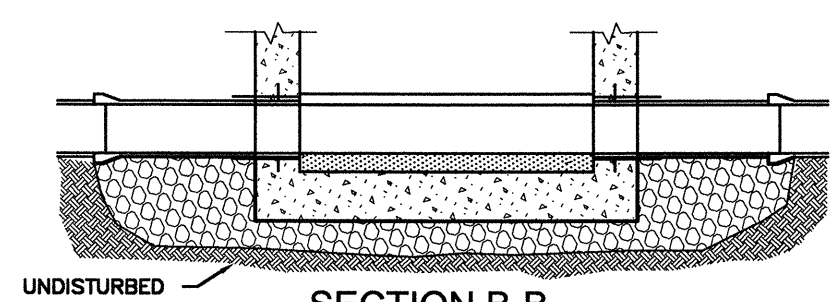
PIPE SIZE (IN.)	A	B	C	MBA (SQ. FT.)	*1
6"	2'-0"	1'-0"	0'-6"	0.5	0.08
8"	2'-0"	1'-3"	0'-9"	0.9	0.08
10"	2'-6"	1'-6"	1'-0"	1.5	0.14
12"	2'-6"	2'-0"	1'-0"	2.0	0.17
16"	3'-0"	2'-6"	1'-4"	3.3	0.30
18"	3'-0"	2'-9"	1'-6"	4.1	0.38
24"	3'-0"	3'-3"	2'-3"	7.3	0.65
30"	3'-6"	3'-9"	3'-0"	11.2	1.22

PIPE SIZE (IN.)	A	B	C	MBA (SQ. FT.)	*1
12"	2'-6"	4'-6"	2'-6"	12.0	1.0

*1 - ESTIMATED C.Y. CONCRETE FOR TEES, BENDS AND PLUGS.
 *2 - MINIMUM BEARING AREA (MBA) IS BASED ON SOIL BEARING CAPACITY OF 2000 PSF.
 *3 - PLACE 6MIL POLYETHYLENE OVER PLUG PRIOR TO POURING CONCRETE.

THRUST BLOCK DETAILS

NTS



SECTION A-A

TYPICAL STANDARD PRECAST MANHOLE WITH CONCRETE BOTTOM

NTS

NOTE: MANHOLE STEPS TO BE VERTICALLY IN LINE WITH "INVERT" OUT FOR PIPE 18" AND LESS. OVER 18" TO BE LOCATED IN LINE WITH BENCH.

FLUSHING TABLE FOR FIRE

SERVICE MAINS

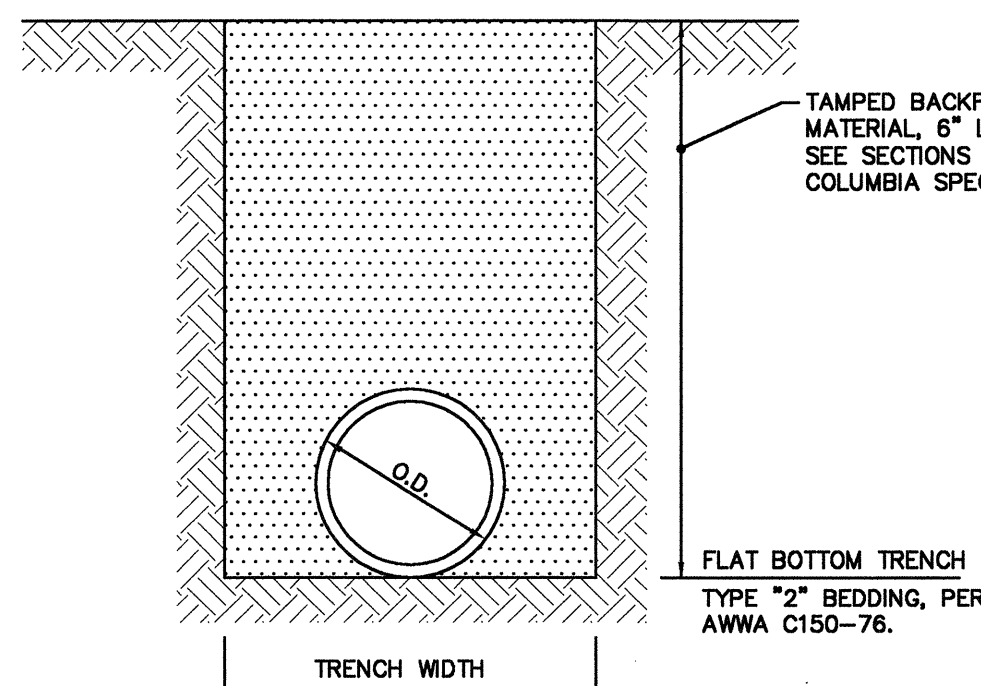
(FLOW REQUIRED TO PRODUCE A VELOCITY OF 10 FT/SEC)

PIPE SIZE (IN.)	FLOW RATE (GPM)
4	390
6	880
8	1,560
10	2,440
12	3,520

NOTE

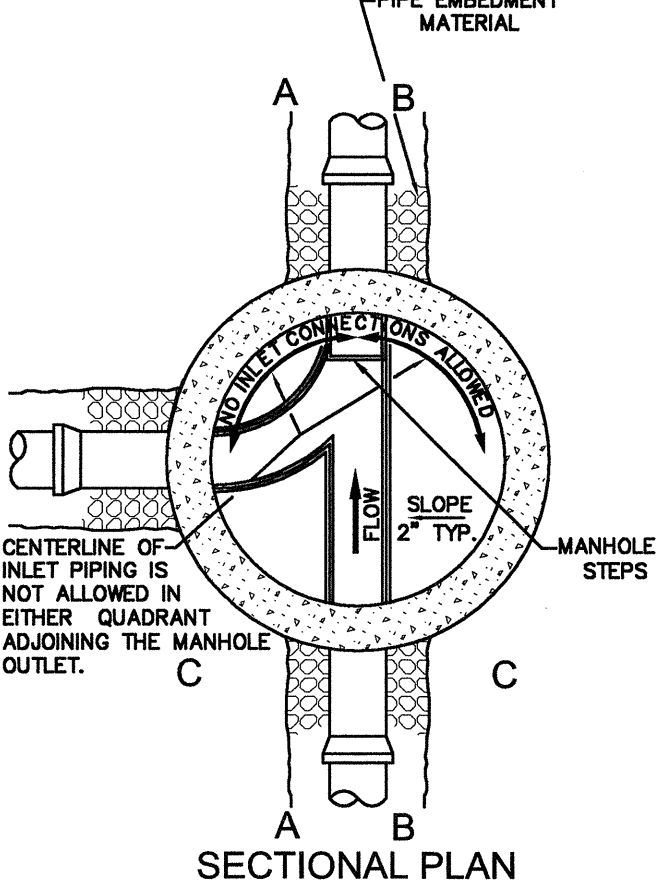
FLUSHING AND TESTING OF PRIVATE FIRE SERVICE MAINS AND LEAD-IN CONNECTIONS TO SYSTEM RISERS MUST BE PERFORMED PER NFPA 24 SECTIONS 9-1 AND 9-2. A COPY OF THE COMPLETED AND SIGNED "CONTRACTOR'S MATERIAL AND TEST CERTIFICATE FOR UNDERGROUND PIPING" MUST BE SUBMITTED PER NFPA 24 9-2.1 BEFORE FINAL APPROVAL OF THE INSTALLATION IS REQUESTED.

PER NFPA 24 10.10.2.2.1, ALL PIPING AND ATTACHED APPURTENANCES SUBJECTED TO SYSTEM WORKING PRESSURE SHALL BE HYDROSTATICALLY TESTED AT 200 PSI OR 50 PSI IN EXCESS OF THE SYSTEM WORKING PRESSURE, WHICHEVER IS GREATER, AND SHALL MAINTAIN THAT PRESSURE WITHOUT LOSS FOR 2 HOURS.



DUCTILE IRON PIPE BEDDING & BACKFILLING DETAIL

NTS



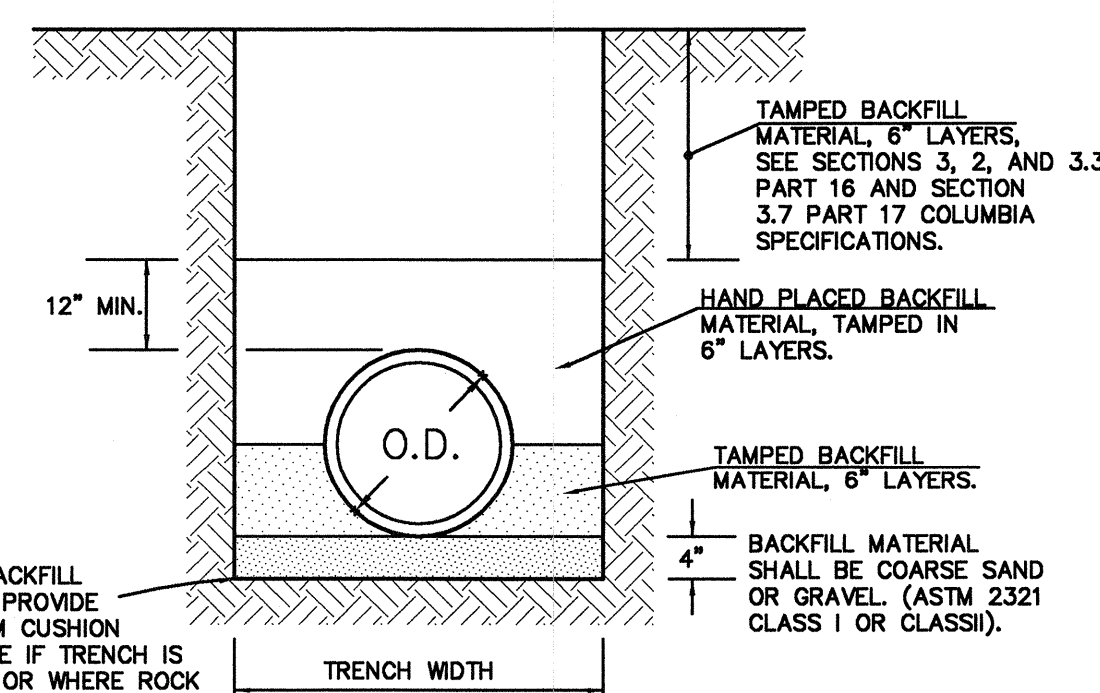
DETAIL "A"

SECTION C-C

- NOTES:
- METER BOXES FOR METERS 3" AND ABOVE SHALL BE CONSTRUCTED OF THE MATERIALS AND TO THE DIMENSIONS SPECIFIED HEREIN.
 - METER BOXES SHALL BE PROVIDED WITH A COVER FABRICATED FROM ONE FOURTH (1/4") INCH THICK FLOOR PLATE STEEL WITH A NON-SKID SURFACE PRIMED AND PAINTED TO COVER ENTIRE BOX. COVERS MUST HAVE A HINGED 24" x 24" INSPECTION LID IN THE CENTER OF THE COVER WITH LIFT HANDLES FOR MANIPULATING THE LID. COVER HANDLES MUST LAY FLAT AND BELOW SURFACE COVER.
 - THE BOX COVER SHALL BE FLUSH WITH THE SURROUNDING GROUND SURFACE AND SHALL HAVE 2" GUIDES ALONG ADJACENT SIDES TO PREVENT LATERAL MOVEMENT.
 - THE BOX SHALL BE PRECAST CONCRETE.
 - SIX (6") INCHES OF #5 CRUSHED STONE SHALL BE PLACED IN THE BOTTOM OF THE BOX. SEE "E" FOR PROPER CLEARANCE BETWEEN THE TOP OF STONE AND THE BOTTOM OF THE PIPE.
 - DUCTILE IRON PIPE MUST RUN COMPLETELY THROUGH METER BOX. METER SHALL BE INSTALLED (CUT-IN) BY CITY-APPROVED CONTRACTOR.
 - VALVE WITH BOX SHALL BE INSTALLED BETWEEN METER BOX AND SOURCE WATER MAIN.
 - METER BOX SHALL HAVE THE DIMENSIONS SHOWN BY THE ABOVE TABLE.

METER VAULT

NTS



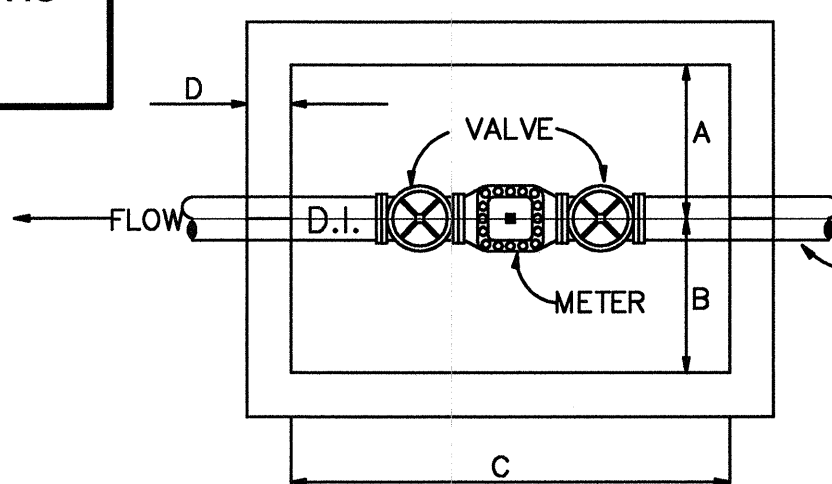
TAMPED BACKFILL MATERIAL PROVIDE 4" MINIMUM CUSHION UNDER PIPE IF TRENCH IS UNSTABLE OR WHERE ROCK HAS BEEN ENCOUNTERED.

THE PIPE IS TO BE BEDDED IN COMPACTED 6" LAYERS TO THE SPRING LINE FIRST, THEN BACKFILLED WITH HAND PLACED MATERIAL COMPACTED IN 6" LAYERS TO A DEPTH OF 12" MINIMUM ABOVE THE PIPE. SEE SECTION 3.2 AND 3.3 (PART 16) AND SECTION 3.7 (PART 17) COLUMBIA SPECIFICATIONS FOR REMAINDER OF THE BACKFILL.

PVC PIPE BEDDING & BACKFILLING DETAIL

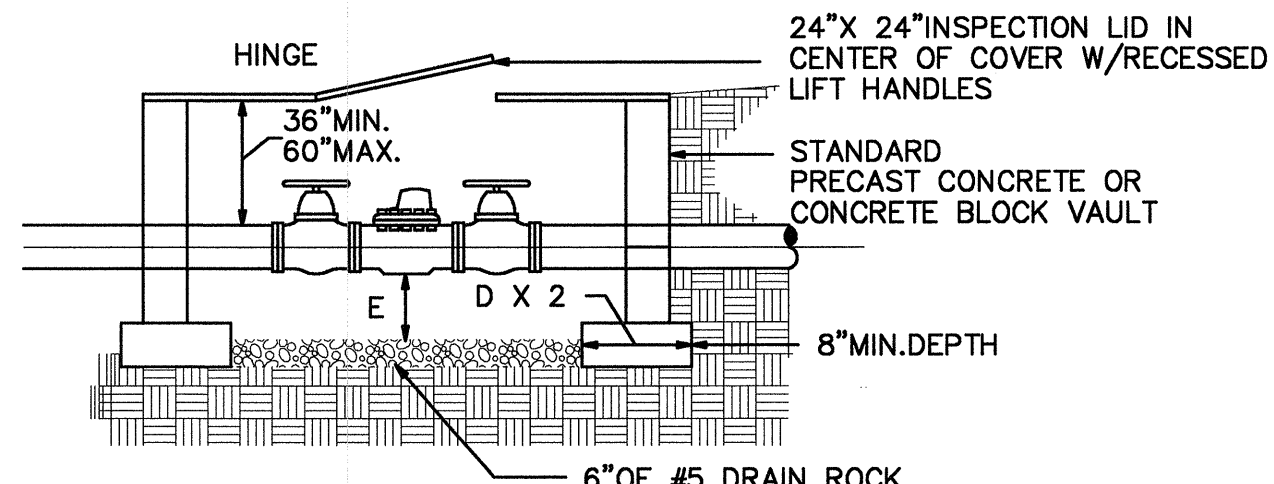
NTS

PLAN VIEW

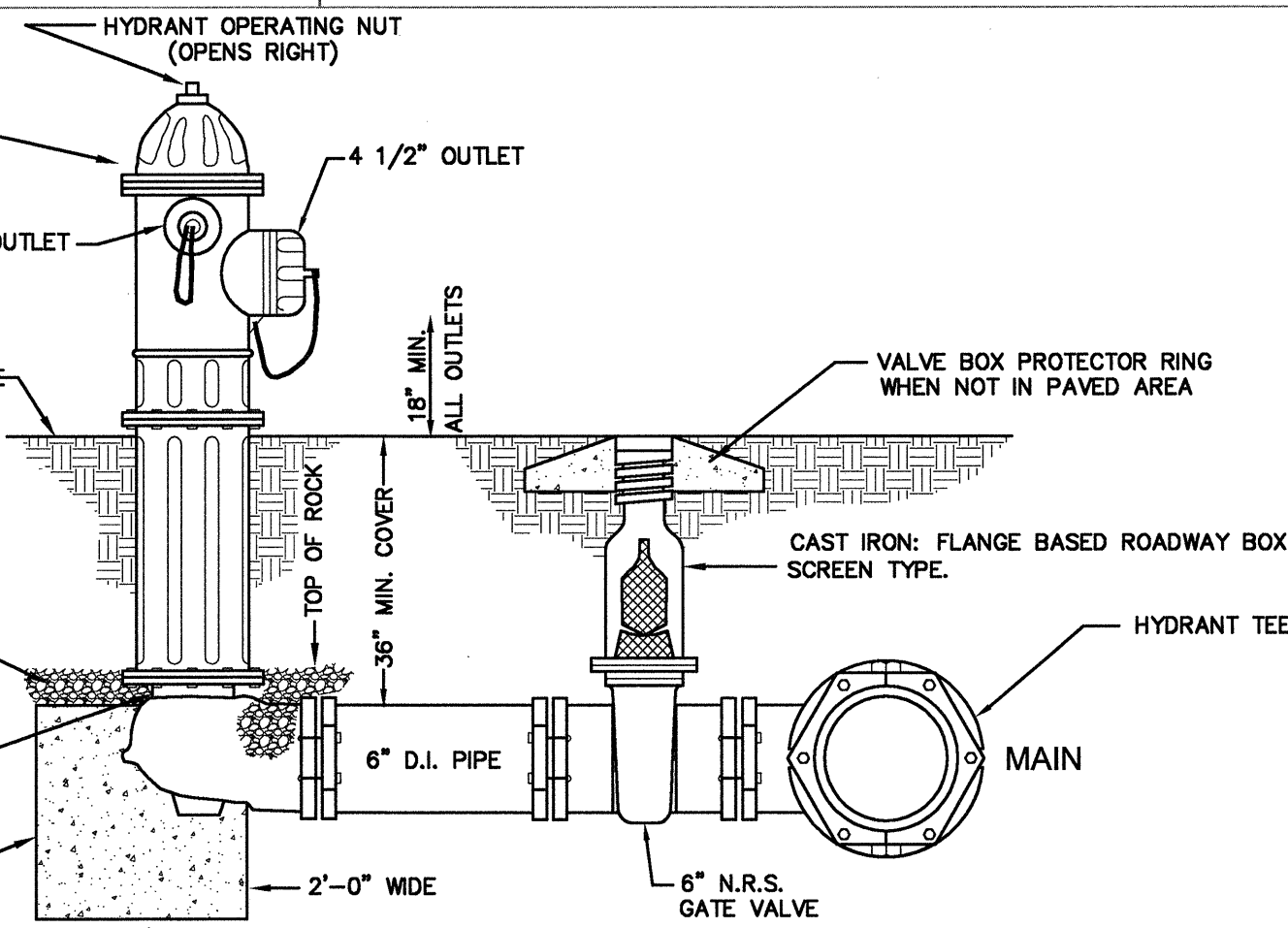


FIRE HYDRANT DETAIL

NTS



ELEVATION VIEW

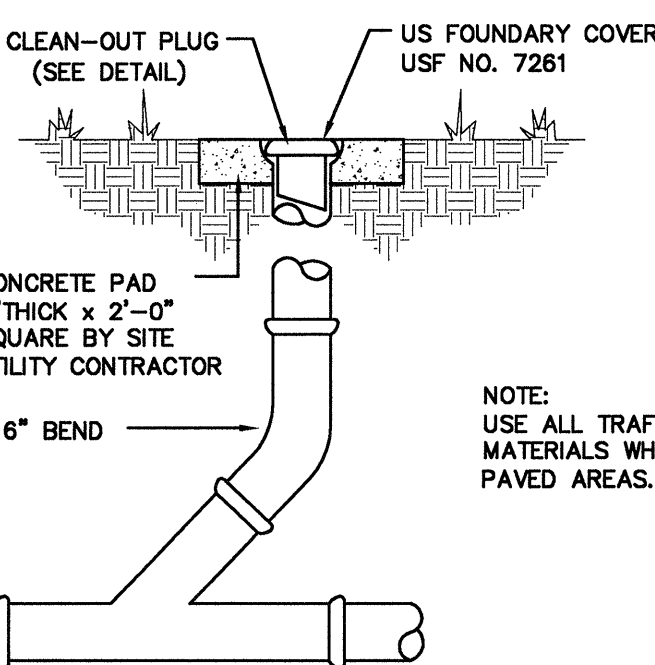


NOTES:

- ALL JOINTS TO BE MECHANICAL.
- HYDRANTS SHALL NOT BE LESS THAN 3' NOR MORE THAN 6' FROM THE CURB OR THE EDGE OF A HARD SURFACE STREET OR ACCESS ROAD, EXCEPT THAT ALONG RURAL ROADS THROUGH UNDEVELOPED AREAS THE MAXIMUM DISTANCE MAY BE INCREASED TO 10'.
- HYDRANT MUST BE LOCATED SO AS TO BE UNOBSTRUCTED FOR 15' EITHER SIDE AS MEASURED ALONG THE CURB OR THE EDGE OF A HARD SURFACE STREET OR ACCESS ROAD. THIS AREA MUST BE FREE OF GROWTH AND OTHER OBSTRUCTIONS WHICH WOULD HINDER ACCESS TO THE HYDRANT.
- MINIMUM DISTANCE BETWEEN VALVE AND HYDRANT SHALL BE 3'.
- BENDS MAY BE USED IN HYDRANT LEAD TO FACILITATE HYDRANT LOCATION.
- GATE VALVES TO OPEN TO THE LEFT.

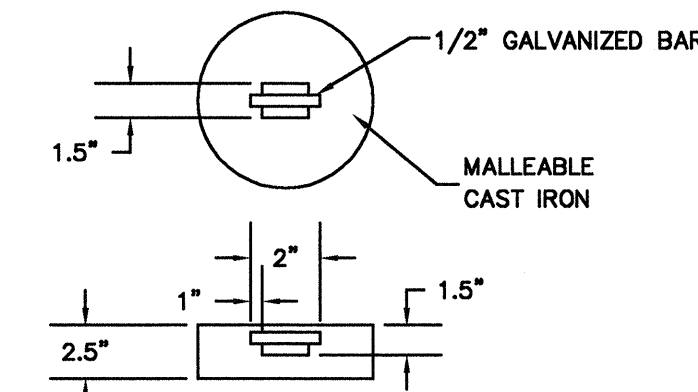
METER BOX DIMENSIONS W/ BY-PASS

METER SIZE	3"	4"	6"	8"	10"
A	30"	30"	36"	42"	48"
B	30"	30"	36"	38"	54"
C	108"	108"	128"	132"	168"
D	6"	6"	6"	8"	8"
E	12"	12"	12"	18"	18"
ACCESS DOOR	24"	24"	24"	24"	24"



CLEANOUT DETAIL

NTS



CLEANOUT PLUG DETAIL

NTS

PROJECT NAME:
 UNIVERSITY OF SOUTH CAROLINA
 DARLA MOORE SCHOOL OF BUSINESS
 CONSTRUCTION
 BID PACKAGE 1C: SITE PREPARATION

USE PROJECT NUMBER:
 H27-6069-AC-1C

743 GREENE STREET
 COLUMBIA, SC 29208
 TEL: 803 777 4022 FAX: 803 777 0484

ARCHITECT:
 RAFAEL VINOLY ARCHITECTS PC
 50 VANDAM STREET
 NEW YORK, NY 10013
 TEL: 212 924 5060 FAX: 212 924 5858

STRUCTURAL ENGINEER, MEP ENGINEER,
 CIVIL ENGINEER, FIRE PROTECTION
 ENGINEER:
 STEVENS & WILKINSON
 1501 MAIN STREET, FLOOR 1
 COLUMBIA, SC 29201-5801
 TEL: 803 765 0320 FAX: 803 254 6209

LANDSCAPE ARCHITECT:
 GRIMBALL-COTTERILL ASSOCIATES
 600 BELTUNE BOULEVARD
 COLUMBIA, SC 29205
 TEL: 803 738 9525 FAX:

SURVEYOR:
 BP BARBER & ASSOCIATES, INC.
 101 RESEARCH DRIVE
 COLUMBIA, SC 29202-1116
 TEL: 803 429 4828 FAX:

SPECIFICATIONS:
 ROBERT SCHWARTZ & ASSOCIATES
 589 8TH AVE., 17TH FLOOR
 NEW YORK, NY 10018
 TEL: 212 691 3248 FAX: 212 633 1613

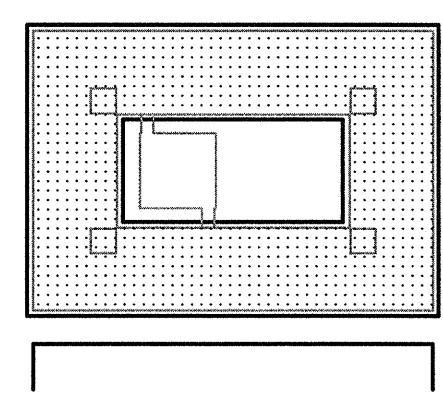
BID PACKAGE 1C
SITE PREPARATION

OCTOBER 21, 2011



SEAL & SIGNATURE

ISSUE NO.	ISSUE DATE	ISSUE NO.	ISSUE DATE	ISSUE NO.	ISSUE DATE
1	2011.10.21	2	2011.10.17	3	2011.09.09
4	2011.08.29	5	2011.08.19	6	2011.07.14



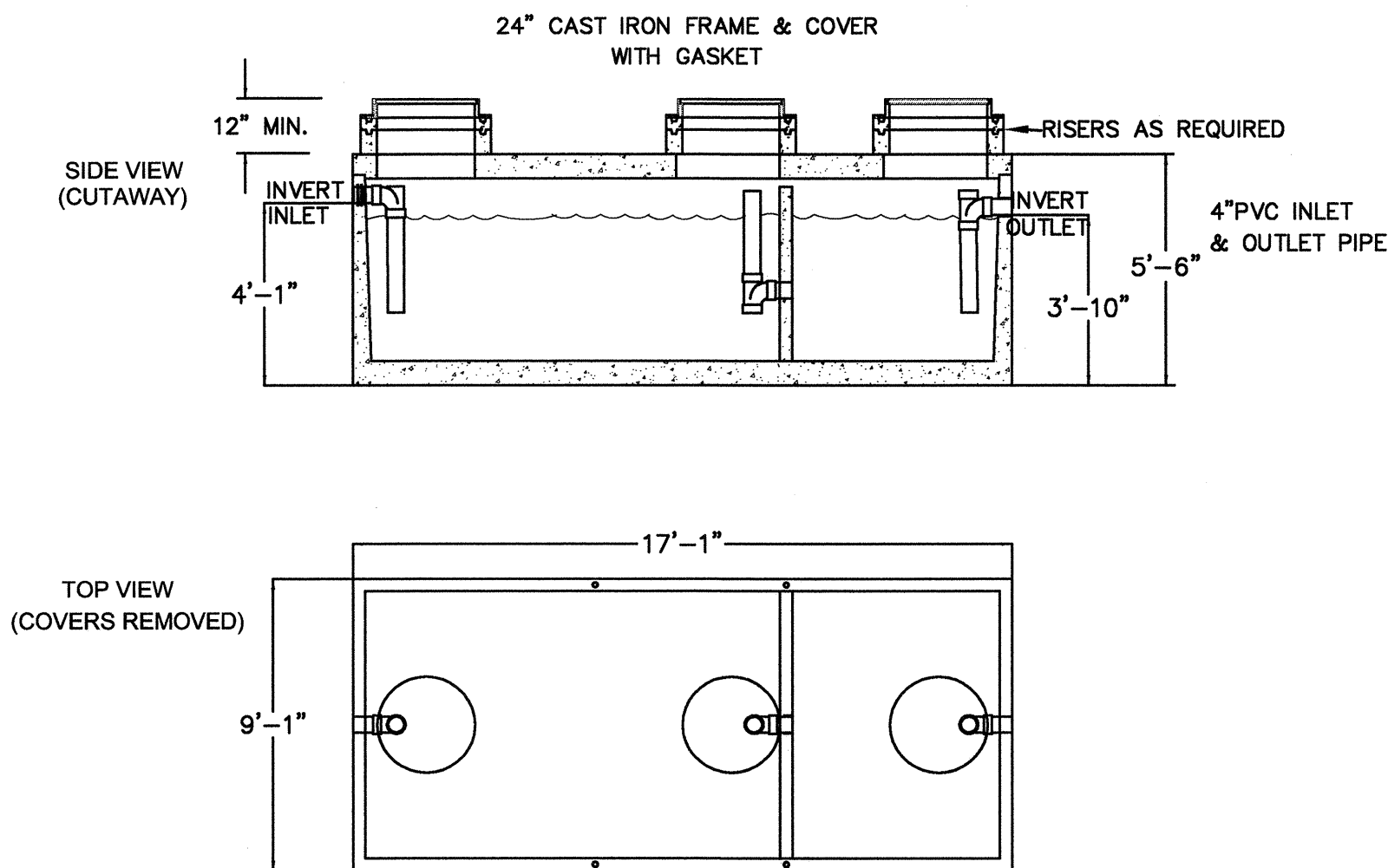
KEY PLAN & NORTH SIGN

WATER & SANITARY SEWER DETAILS

SHEET TITLE:

C2103

SHEET NUMBER:



- NOTES
- 1) DIMENSIONS ARE APPROXIMATE & MAY VARY PER MANUFACTURER
 - 2) TANK SHALL BE DESIGNED FOR H-20 WHEEL LOADING & WATER TABLE AT ONE FOOT BELOW GRADE.
 - 3) SUB-BASE & CONCRETE PAD (IF NECESSARY) DESIGN SHALL BE PER CONTRACTOR (THROUGH A LICENSED ENGINEER) OR MANUFACTURER'S INSTRUCTIONS.

3,000 GALLON GREASE INTERCEPTOR DETAIL
NTS

USE BUSINESS PARTNERSHIP FOUNDATION
ON BEHALF OF
USC CAMPUS PLANNING & CONSTRUCTION

PROJECT NAME:
UNIVERSITY OF SOUTH CAROLINA
DARLA MOORE SCHOOL OF BUSINESS
CONSTRUCTION
BID PACKAGE 1C: SITE PREPARATION

OSE PROJECT NUMBER:
H27-6069-AC-1C

743 GREENE STREET
COLUMBIA, SC 29298
TEL: 803 777 4022 FAX: 803 777 0484

ARCHITECT:
RAFAEL VINOLY ARCHITECTS PC
50 VANDAM STREET
NEW YORK, NY 10013
TEL: 212 924 5060 FAX: 212 924 5858

STRUCTURAL ENGINEER, MEP ENGINEER,
CIVIL ENGINEER, FIRE PROTECTION
ENGINEER:
STEVENS & WILKINSON
1501 MAIN STREET, FLOOR 1
COLUMBIA, SC 29201-5801
TEL: 803 765 0320 FAX: 803 254 6209

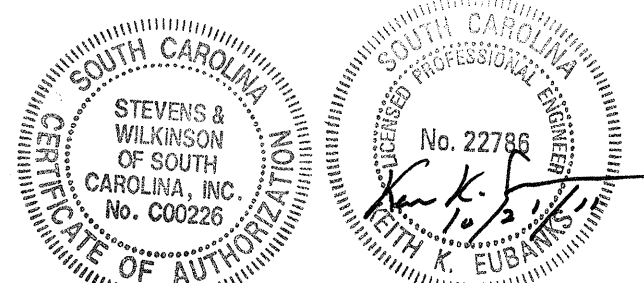
LANDSCAPE ARCHITECT:
GRIMBALL-COTTERILL ASSOCIATES
600 BELTLINE BOULEVARD
COLUMBIA, SC 29205
TEL: 803 738 9525 FAX:




















































SURVEYOR:
BP BARBER & ASSOCIATES, INC.
101 RESEARCH DRIVE
COLUMBIA, SC 29202-1116
TEL: 803 429 4028 FAX:

SPECIFICATIONS:
ROBERT SCHWARTZ & ASSOCIATES
589 8TH AVE., 17TH FLOOR
NEW YORK, NY 10018
TEL: 212 691 3248 FAX: 212 633 1613

BID PACKAGE 1C
SITE PREPARATION

OCTOBER 21, 2011



SEAL & SIGNATURE					
					
					
					
					
					
					
					
					
					
					
					
					
					
					
					
					
					
ISSUE NO.	ISSUE DATE	ISSUE NO.	ISSUE DATE	ISSUE NO.	ISSUE DATE

— MINIMUM 6" THICK OF 2"-3" AVE.
STONE DIAMETER ON NON-WOVEN
GEOTEXTILE FABRIC

24' MINIMUM

NTS



SECTION A-A

GENERAL NOTES:

1. SEDIMENT SHALL BE REMOVED AND TRAP RESTORED TO ITS ORIGINAL DIMENSIONS WHEN THE SEDIMENT HAS ACCUMULATED TO 1/2 THE DESIGN DEPTH OF THE TRAP.
2. REMOVED SEDIMENT SHALL BE DEPOSITED IN A SUITABLE AREA AND IN SUCH A MANNER THAT IT WILL NOT ERODE.
3. THE STRUCTURE SHALL BE INSPECTED AFTER EACH STORM EVENT BY THE FINANCIALLY RESPONSIBLE PARTY OR HIS AGENT AND REPAIRS MADE AS NECESSARY.
4. CONSTRUCTION OPERATIONS SHALL BE CARRIED OUT IN SUCH A MANNER THAT EROSION AND WATER POLLUTION ARE MINIMIZED.
5. THE SEDIMENT TRAP SHALL BE REMOVED AND THE AREA STABILIZED WHEN THE DRAINAGE BASIN HAS BEEN PROPERLY STABILIZED.
6. SEE SILT FENCE DETAIL FOR SILT FENCE INSTALLATION.

NTS

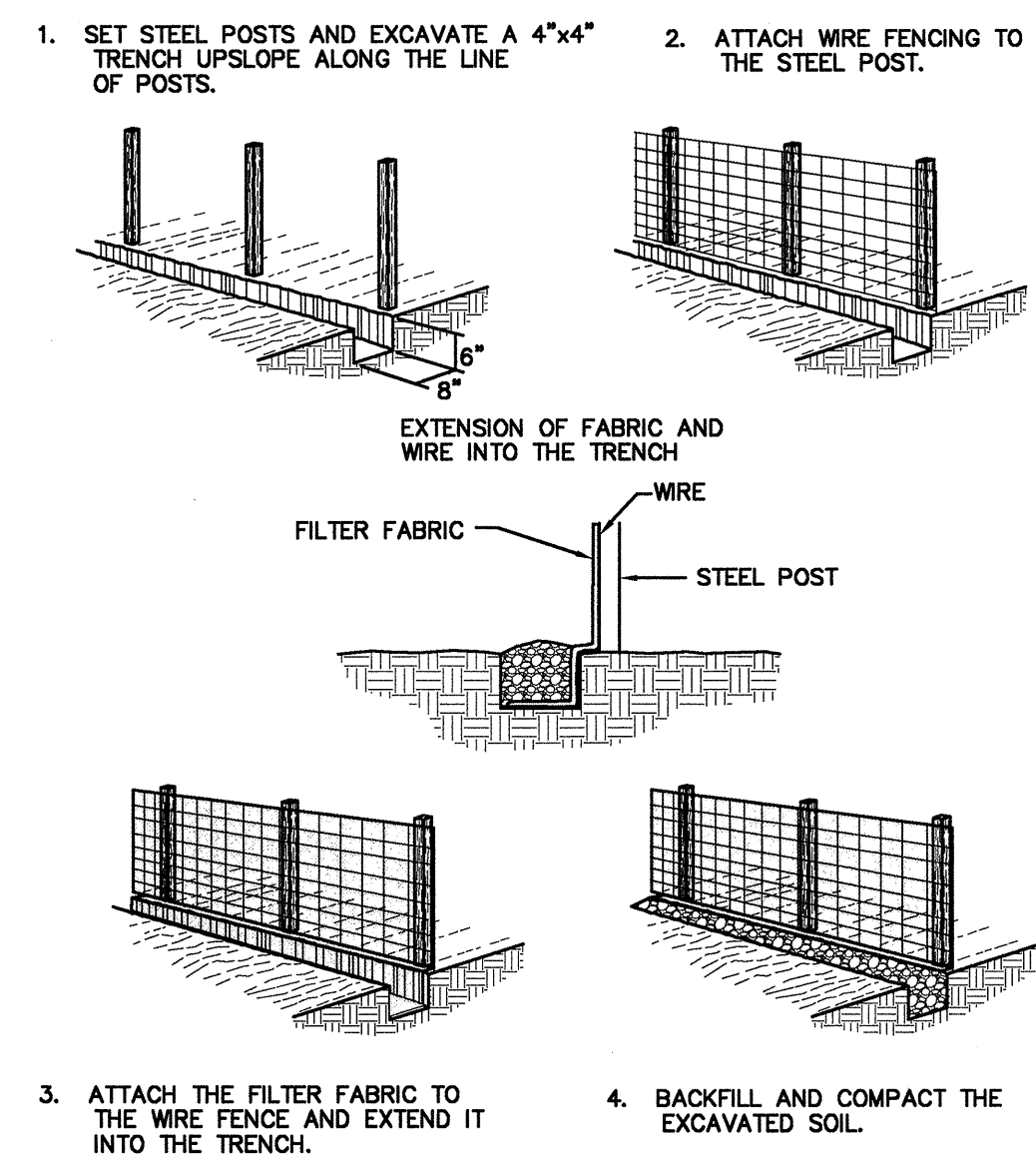


SEDIMENT TUBE INLET PROTECTION DETAILS

NTS



RC



SILT FENCE NOTES:

1. THE HEIGHT OF A SILT FENCE SHOULD NOT EXCEED 36 INCHES. HIGHER FENCES MAY IMPOUND VOLUMES OF WATER SUFFICIENT TO CAUSE THE STRUCTURE TO FAIL.
2. THE FILTER FABRIC SHOULD BE PURCHASED IN A CONTINUOUS ROLL CUT TO THE LENGTH OF THE FENCE TO AVOID THE USE OF JOINTS. WHEN JOINTS ARE NECESSARY, A FILTER CLOTH SHOULD BE SPLICED TOGETHER ONLY AT A SUPPORT POST WITH A MINIMUM 6-INCH OVERLAP AND SEALED SECURELY.
3. POSTS SHOULD BE SPACED A MAXIMUM OF 10 FEET APART AT THE FENCE LOCATION AND DRIVEN SECURELY INTO THE GROUND A MINIMUM OF 12 INCHES. WHEN EXTRA STRENGTH FABRIC IS USED WITHOUT THE WIRE SUPPORT FENCE, POST SPACING SHOULD NOT EXCEED 6 FEET.
4. THE FENCE SHOULD BE INSTALLED AT APPROXIMATELY 4 INCHES WIDE AND 4 INCHES DEEP ALONG THE LINE OF POSTS, UPSLOPE FROM THE FENCE.
5. WHEN STANDARD STRENGTH FILTER IS USED, A WIRE MESH SUPPORT FENCE SHOULD BE FASTENED SECURELY TO THE UPSLOPE SIDE OF THE POSTS USING HEAVY DUTY WIRE STAPLES AT LEAST 6 INCH LONG, TIE WIRES OR HOG RINGS. THE WIRE SHOULD BE STAPLED TO THE UPSLOPE A MINIMUM OF 2 INCHES AND SHOULD NOT EXCEED MORE THAN 36 INCHES ABOVE THE ORIGINAL GROUND SURFACE.
6. THE STANDARD STRENGTH FILTER FABRIC SHOULD BE STAPLED OR WIRED TO THE FENCE, AND 8 INCHES OF THE FABRIC SHOULD BE EXTENDED INTO THE TRENCH. THE FABRIC SHOULD NOT EXTEND MORE THAN 36 INCHES ABOVE THE ORIGINAL GROUND SURFACE. DO NOT STAPLE FILTER FABRIC TO TREES.
7. WHEN EXTRA STRENGTH FILTER FABRIC AND CLOSER POST SPACING ARE USED, THE WIRE MESH SUPPORT FENCE MAY BE ELIMINATED. IN SUCH A CASE, THE FILTER FABRIC IS STAPLED OR WIRED DIRECTLY TO THE POSTS WITH ALL OTHER PROVISIONS OF NO. 6 APPLYING.
8. THE TRENCH SHOULD BE BACKFILLED AND THE SOIL COMPACTED OVER THE FILTER FABRIC.
9. ONLY STEEL POSTS ARE ALLOWED.
10. SEDIMENT SHALL BE REMOVED & SILT FENCING RESTORED WHEN SEDIMENT HAS ACCUMULATED TO A HEIGHT OF 12" AGAINST THE SILT FENCE.

SILT FENCE DETAIL

NTS

SEDIMENT & EROSION CONTROL DETAILS

TAILS
NTS

USC BUSINESS PARTNERSHIP FOUNDATION
ON BEHALF OF
USC CAMPUS PLANNING & CONSTRUCTION

PROJECT NAME:
UNIVERSITY OF SOUTH CAROLINA
DARLA MOORE SCHOOL OF BUSINESS
CONSTRUCTION
BID PACKAGE 1C: SITE PREPARATION

OSE PROJECT NUMBER:
H27-6069-AC-1C

743 GREENE STREET
COLUMBIA, SC 20298
TEL: 803 777 4022 FAX: 803 777 0484

ARCHITECT:
RAFAEL VIÑOLY ARCHITECTS PC
50 VANDAM STREET
NEW YORK, NY 10013
TEL: 212 924 5060 FAX: 212 924 5858

STRUCTURAL ENGINEER, MEP ENGINEER
CIVIL ENGINEER, FIRE PROTECTION
ENGINEER:

STEVENS & WILKINSON
1501 MAIN STREET, FLOOR 1
COLUMBIA, SC 29201-5801
TEL: 803 765 0320 FAX: 803 254 6209

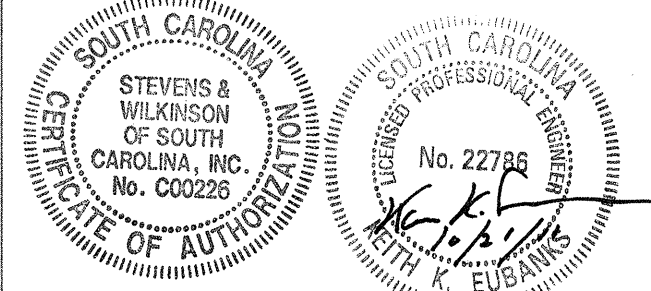
LANDSCAPE ARCHITECT:
GRIMBALL-COTTERILL ASSOCIATES
600 BELTLINE BOULEVARD
COLUMBIA, SC 29205
TEL: 803 738 9525 FAX:

SURVEYOR:
BP BARBER & ASSOCIATES, INC.
101 RESEARCH DRIVE
COLUMBIA, SC 29202-1116
TEL: 803 429 4028 FAX:

SPECIFICATIONS:
ROBERT SCHWARTZ & ASSOCIATES
589 8TH. AVE., 17TH. FLOOR
NEW YORK, NY 10018
TEL: 212 691 3248 FAX: 212 633 1613

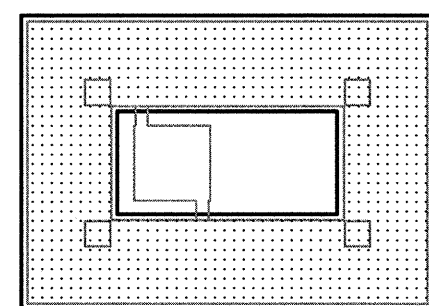
BID PACKAGE 1C
SITE PREPARATION

OCTOBER 21, 2011



SEAL & SIGNATURE

ISSUE NO.	ISSUE DATE	ISSUE NO.	ISSUE DATE	ISSUE NO.	ISSUE DATE
3	2011.10.21				
4	2011.10.17				
5	2011.09.09				
7	2011.08.29				
2	2011.08.19				
1	2011.07.14				
0					



KEY PLAN & NORTH SIGN

SEDIMENT & EROSION CONTROL DETAILS

SHEET TITLE :

C2105

SHEET NUMBER :



GENERAL NOTES:

1. CONTRACTOR TO PATCH AND REPAIR POST HOLES UPON FENCE REMOVAL AND ALSO ALL OTHER DAMAGES TO AREAS OF WORK AS REQUIRED
2. FENCE TYPES (REFER TO SHEET A0203):
FENCE TYPE 1: "STANDARD DRIVEN POSTS WITH FABRIC"
FENCE TYPE 2: "BLOCK AND PANEL FENCING WITH FABRIC"

USC BUSINESS PARTNERSHIP FOUNDATION
ON BEHALF OF
USC CAMPUS PLANNING & CONSTRUCTION

PROJECT NAME:
UNIVERSITY OF SOUTH CAROLINA
DARLA MOORE SCHOOL OF BUSINESS
CONSTRUCTION
BID PACKAGE 1C: CIVIL
OSE PROJECT NUMBER:
H27-6069-AC-1C
743 GREENE STREET
COLUMBIA, SC 29298
TEL: 803 777 0322 FAX: 803 777 0484

ARCHITECT:
RAFAEL VINOLY ARCHITECTS PC
50 VANDAM STREET
NEW YORK, NY 10013
TEL: 212 924 5060 FAX: 212 924 5858
STRUCTURAL ENGINEER, MEP ENGINEER,
CIVIL ENGINEER, FIRE PROTECTION
ENGINEER:
STEVENS & WILKINSON
1501 MAIN STREET, FLOOR 1
COLUMBIA, SC 29201-5001
TEL: 803 765 0320 FAX: 803 254 6209

LANDSCAPE ARCHITECT:
GRIMBALL-COTTELL ASSOCIATES
600 BELTLINE BOULEVARD
COLUMBIA, SC 29205
TEL: 803 738 9525 FAX:

SURVEYOR:
BP BARBER & ASSOCIATES, INC.
101 RESEARCH DRIVE
COLUMBIA, SC 29202-1116
TEL: 803 429 4028 FAX:

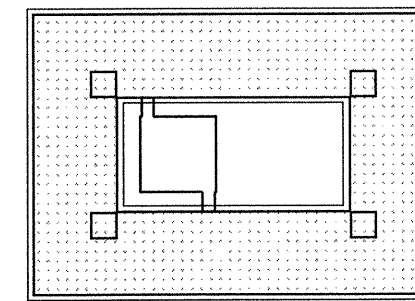
SPECIFICATIONS:
ROBERT SCHWARTZ & ASSOCIATES
589 8TH AVE., 17TH FLOOR
NEW YORK, NY 10018
TEL: 212 691 3248 FAX: 212 633 1613

BID PACKAGE 1C
SITE PREPARATION

OCTOBER 21, 2011

FOR INFORMATIONAL
PURPOSES ONLY

SEAL & SIGNATURE			
ISSUE NO.	ISSUE DATE	ISSUE NO.	ISSUE DATE
1	2011.10.21	2	2011.10.17
2	2011.09.13	3	2011.08.29
3	2011.07.16	4	2011.05.27
4	2011.05.17	5	2011.04.29
5	2011.05.05		



KEY PLAN & NORTH SIGN

1" = 30'
30 60

TEMPORARY CONSTRUCTION
FENCING

SHEET TITLE:

A0202B
SHEET NUMBER: